



MODEL BUILDINGS

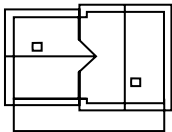
- > Realistic detailing
- > Accurate fit
 - > Realistic coloring
 - > Parts molded in multiple appropriate colors – no painting needed
- > Easy assembly
 - > Weathered parts on many buildings
 - > Comprehensive, easy to understand instructions





62040 "Rosenbach" Station

With its rural architecture, pleasant warm colors, pretty window shutters and benches under the little awning, this station recalls a genuine piece of railroading romance thought to have been lost for ever. We recommend the baseplates #62005 to enhance the model (1 set).

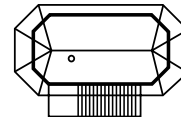


370 x 240 x 240 mm
14.6 x 9.4 x 9.4 "



62041 "Rosenbach" Switch Tower

The control-room with windows in every direction houses the lever frames that operate the switches and signals. Typical of this type of tower is the filigreed outside staircase and handrail. We recommend the baseplates #62005 to enhance the model (1 set).

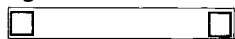


260 x 200 x 410 mm
10.2 x 7.9 x 16.1 "

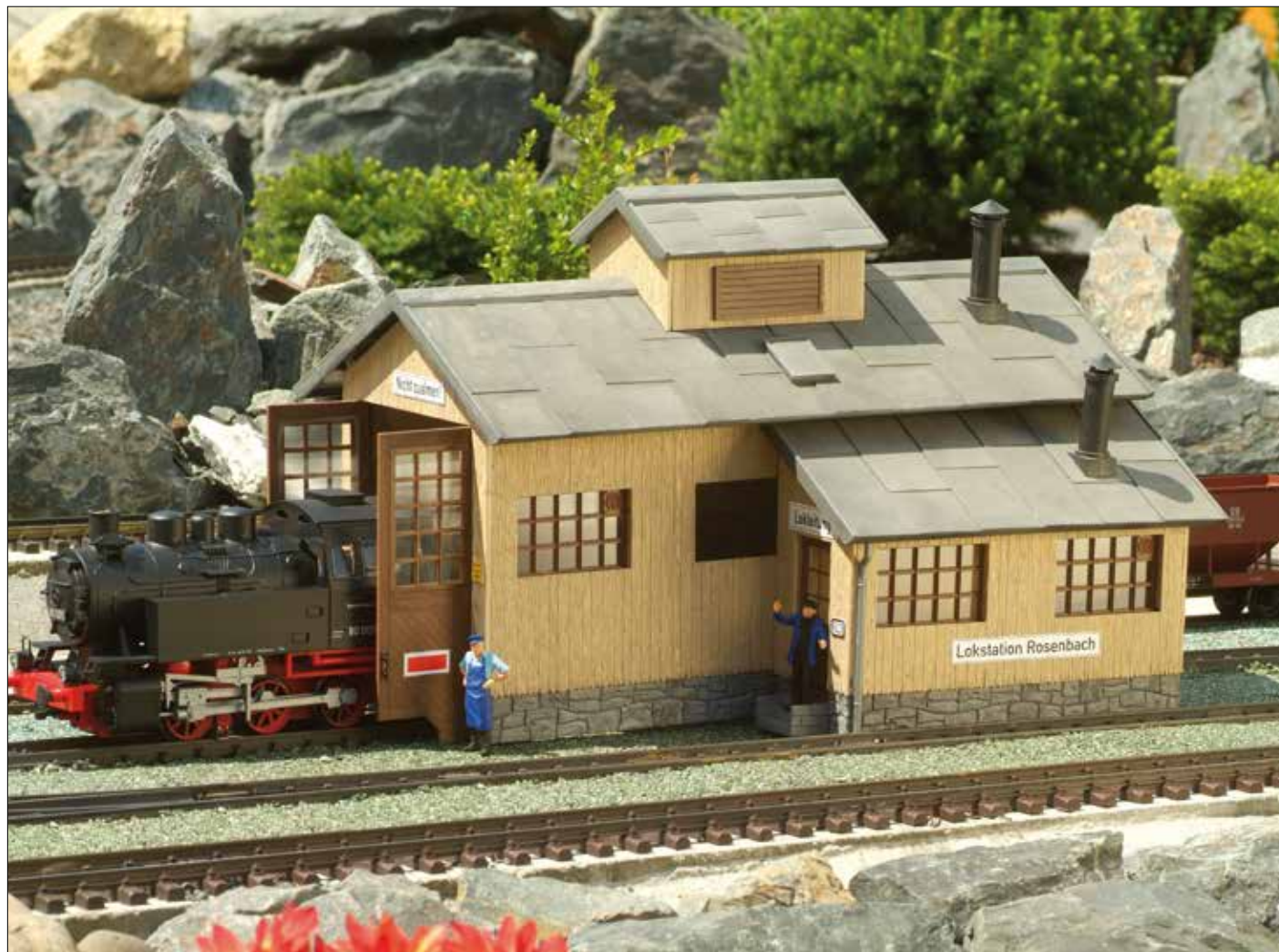


62033 "Rosenbach" Signal Bridge

In order to provide the engineer with an unobstructed view of the signals, many railroads used special signal bridges. The steel bridge is weathered and carries two adjustable semaphore type signals.

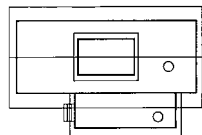


55 x 485 x 300 mm
2.2 x 19.1 x 11.8 "



62042 "Rosenbach" Engine Shed

The shed has large double doors and a roof with a louvred superstructure for ventilation. The annex houses the local engine dispatcher's office. Doors can be opened and closed.

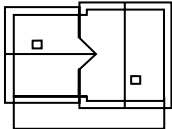


290 x 500 x 350 mm
11.4 x 19.7 x 13.8 "

62029 Blue Creek Valley Station

The cozy station provides a welcome retreat from the weather for passengers awaiting for the next train. The building is realistically weathered and has opening doors.

We recommend the baseplates #62005 to enhance the model (1 set).



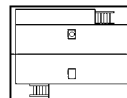
370 x 240 x 240 mm
14.6 x 9.4 x 9.4 "



62008 Sonneberg Goods Depot

Wooden ramps on both sides of the building aide the loading and unloading of freight cars. At the frontside is a fully operational roll-up door while a wooden door on the back allows for handling larger goods.

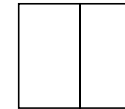
We recommend the baseplates #62005 to enhance the model (1 set).



390 x 526 x 370 mm
18.9 x 20.7 x 14.6 "



62005 Baseplates with Cobbled surface
The set consists of two baseplates that provide a stable foundation for PIKO model buildings.

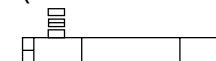


One plate:
460 x 267 x 10 mm
18.1 x 10.5 x 0,4 "



62006 Platform Sections with Cobbled surface

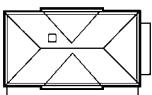
The crossing section kit is an ideal weather-resistant addition to the Covered Platform #62004 and "Neustadt" station #62030. (tracks not included)



1138 x 174 x 10 mm
44.5 x 6.9 x 0.4 "

62030 Neustadt Station

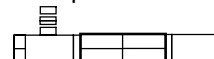
1 The station has many distinctive features: decorative brickwork at the corners, large decorated pillars in the entrance area, a hipped roof and an awning with wrought iron detailing. The doors can be opened and closed. We recommend the set of baseplates #62005 to enhance the model (1 set).



550 x 355 x 400 mm
21.6 x 14.0 x 15.7 "

62004 Covered Platform

2 The platform is weather-resistant and can be placed alongside the track or between adjacent tracks. That way a station can have two or more parallel tracks with platforms.



550 x 355 x 400 mm
21.6 x 14.0 x 15.7 "



62074 Streitberg Passenger Shelter

Located in the Wiesent Valley in Frankonian Switzerland the Streitberg passenger shelter protects passengers from the hot sun or pouring rain. The kit is equipped with opening doors. Benches as well as picnic tables are included.

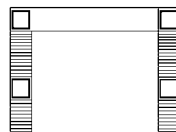
We recommend the baseplates #62005 to enhance the model (1 set).



250 x 340 x 150 mm
9.8 x 13.4 x 5.9



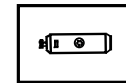
62032 "Neustadt" Railway Footbridge



485 x 360 x 300 mm
19.7 x 14.8 x 11.8 "



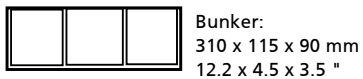
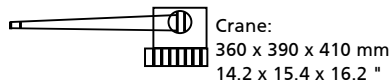
62075 Diesel Locomotive Filling Station



270 x 175 x 110 mm
10.6 x 6.9 x 4.3 "

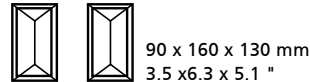


62076 Coaling Station



62113 Utility Buildings

The kit includes two weathered utility buildings with opening doors.



62296 Load - Crates & Pallets

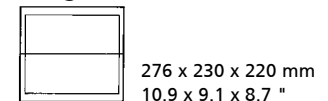
The kit includes 4 crates, 4 pallets and several long and short pieces of lumber.



62232 Track Inspection Shed

In order to provide track inspection cars with shelter, many railroad companies built small sheds. The old fashioned roof, planked walls, double doors and the small side entrance have been weathered. The gate opens and closes automatically.

Note: Kit includes a corrugated metal-style roof instead of a shingled roof.



62209 "Grizzly Flats" Station

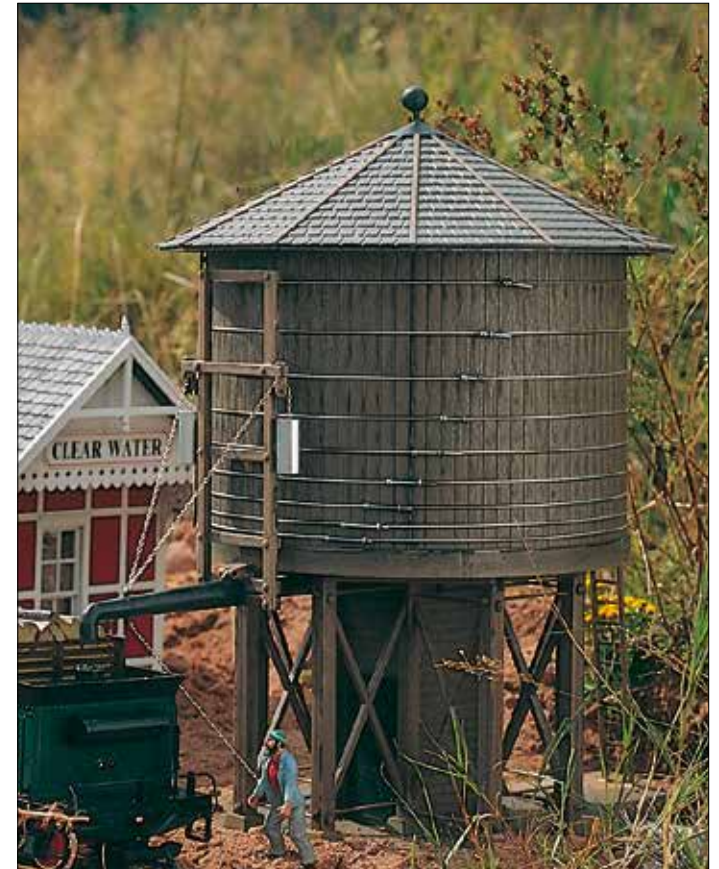
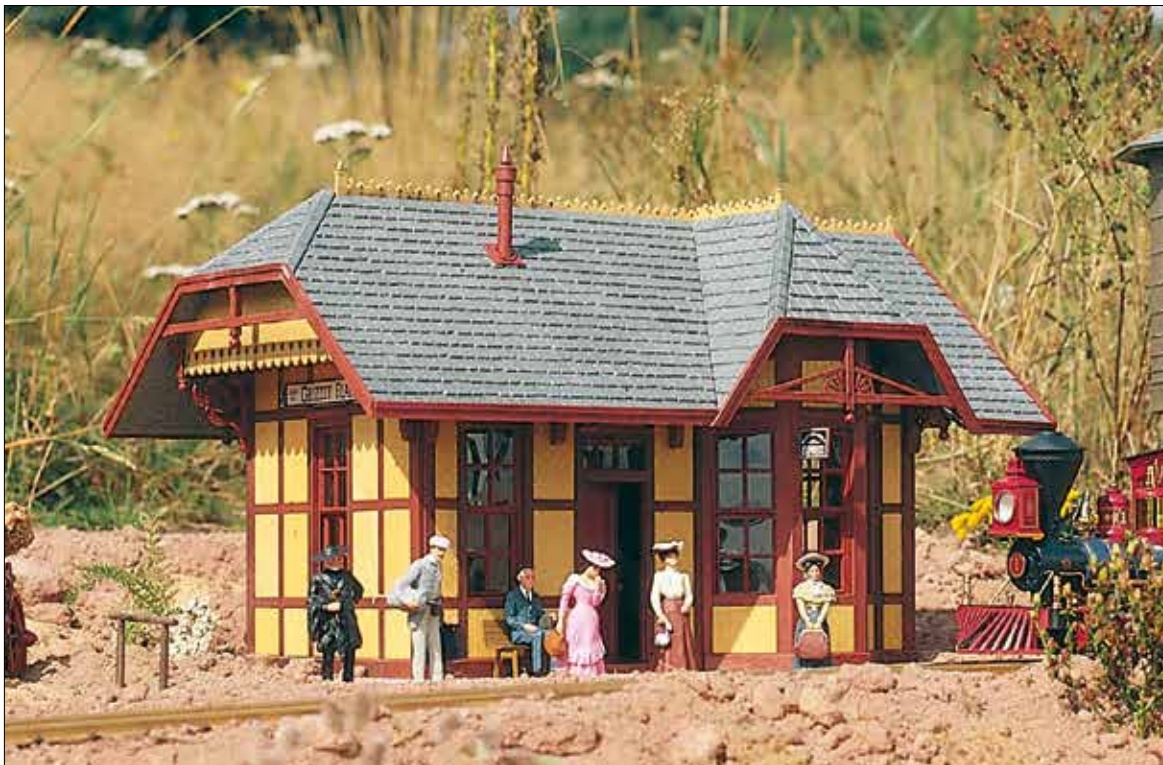
The American Victorian style station is typical for the time around 1870. The doors and windows can be opened and closed. We recommend the baseplates #62005 to enhance the model (1 set).



485 x 310 x 290 mm
19.1 x 12.2 x 11.4 "

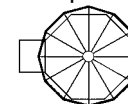


#62209 Rear View "Grizzly Flats" Station



62210 "Rio Grande" Water Tower

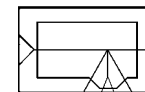
The artificially aged and weather-resistant kit is an original reproduction of a 50,000 gallon tank used by the Rio Grande Southern in Rico, CO. It is the prototype for all RGS & Denver & Rio Grande water tanks. The tank can be filled with water and emptied via the spout. Baseplate included.



252 x 335 x 450 mm
9.9 x 13.2 x 17.7 "



62230 "Clear Water" Station

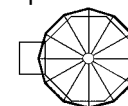


485 x 310 x 290 mm
19.1 x 12.2 x 11.4 "

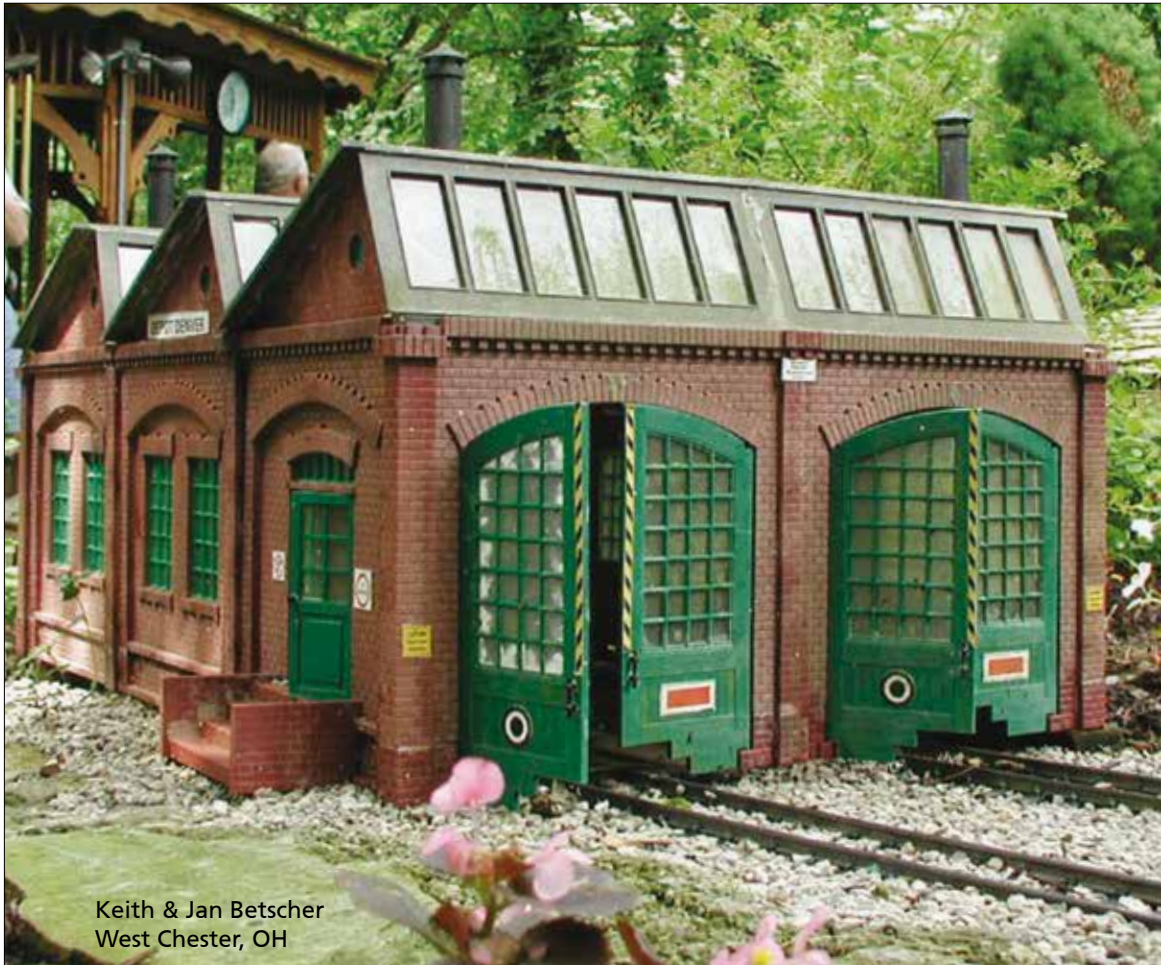


62231 "Durango" Water Tower

The tank can be filled with water and emptied via the spout. Baseplate included.



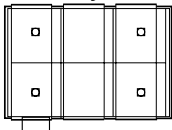
252 x 335 x 450 mm
9.9 x 13.2 x 17.7 "



Keith & Jan Betscher
West Chester, OH

62001 "Sonneberg" Loco Shed

With the PIKO automatic door closer, #62002 the doors can be opened and closed automatically by a locomotive moving in or out. The shed accommodates locomotives of up to 25.6" in length. The realistically aged and weather-resistant building can be extended in length as well as in width by adding extension kits.



526 x 705 x 370 mm
20.7 x 27.8 x 14.6 "
Track Centers 230 mm

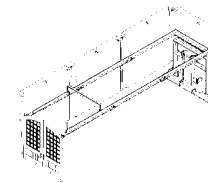


62007 Loco Shed Extension Set

With this extension set the Sonneberg Loco Shed, #62001, can be extended by 9.1" (23cm). The set contains all necessary parts as well as the proper extension for the Automatic Door Closer, # 62002.
230 x 526 x 370 mm
9.1 x 20.7 x 14.6 "

62002 Automatic Door Closer

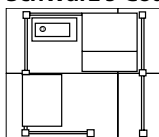
Once the Automatic Door Closer is added to the Sonneberg Loco Shed #62001 the doors will be opened and closed automatically by a locomotive moving in or out. Due to its modular design the Automatic Door Closer can be used with extended loco sheds.



1138 x 174 x 10 mm
44.5 x 6.9 x 0.4 "



62056 Schwarz's Coal Supply



634 x 534 x 220 mm
24.9 x 21.0 x 9.1 "



62261 Log Cabins

Two small log cabins with opening doors.

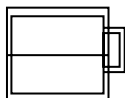


90 x 130 x 120 mm
3.6 x 5.1 x 4.7 "



62044 Red River Loco-shed

Engine shed with two-wing door. Doors open and close automatically as the locomotive enters or leaves.

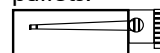


316 x 230 x 220 mm
12.4 x 9.1 x 8.7 "



62077 Loading Crane

Small hand-operated loading crane. The kit includes several crates and pallets.

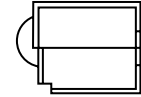


335 x 145 x 60 mm
13.2 x 5.7 x 2.4 "



62059 St. Ursula Church

The lovely St. Ursula's church is scenically situated in the cozy Fex Valley of Switzerland. The interior is adorned with marvelous 16th century frescoes. The model comes complete with a bell and an opening front door.

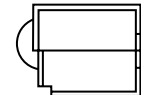


300 x 200 x 350 mm
11.8 x 7.9 x 13.8 "



62109 Saint Bonifaz Chapel

This beautiful little chapel overlooks the town. The bell rings at regular intervals to welcome the townspeople through the model's opening doors. We recommend the set of baseplates #62005 to enhance the model further (1 set).

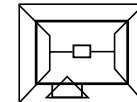


300 x 200 x 350 mm
11.8 x 7.9 x 13.8 "



62228 "Red River" Station

This realistically weathered building can be easily disassembled and is equipped with opening doors. We recommend the set of baseplates #62005 to enhance the model (1set).

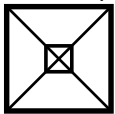


215 x 175 x 205 mm
8.5 x 6.9 x 8.1 "



62021 "Fred's" Snack Bar

The kiosk is realistically weathered and weather proof. Various accessories such as flags and newspaper stands are included to complement the kiosk. We recommend the baseplates #62005 to enhance the model (1 set).



150 x 150 x 170 mm
4.9 x 4.9 x 5.9 "

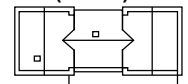


62285 Set of 5 Garden seats

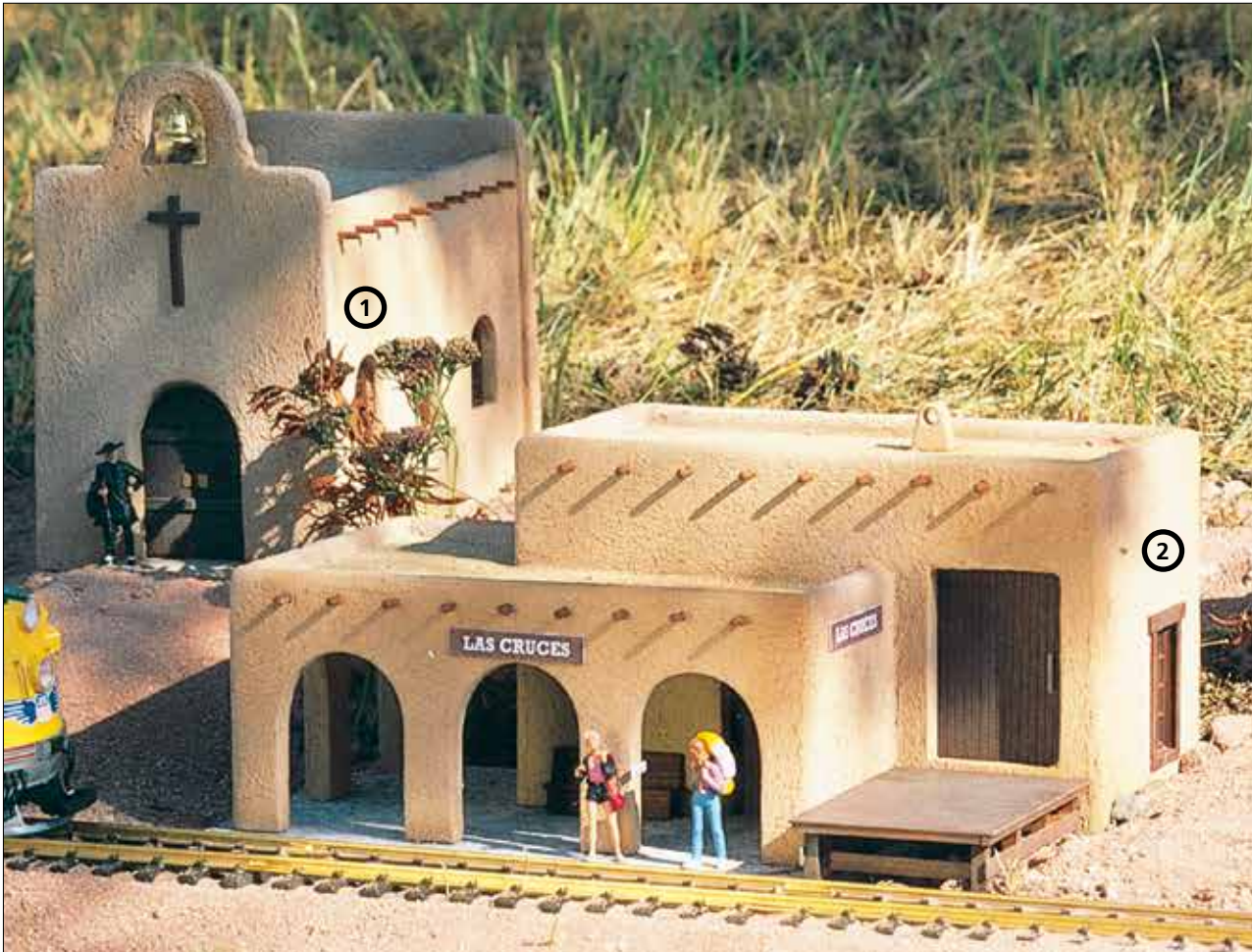


62043 "Tiefenbach" Station

Somewhat off the beaten path but still close by is the station "Tiefenbach". With its pleasant warm colors and attractive shutters, the station adds a touch of romance to the garden railway. In addition to the ticket hall, the three-part building houses a busy station restaurant. The doors can be opened and closed. To complete the set we recommend the baseplates #62005 (2 sets).



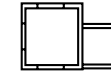
610 x 240 x 240 mm
24.0 x 9.4 x 9.4 "



The Southwest Series offers a number of typical Southwest adobe-style buildings. Earth tone colors fit well with the sun-drenched landscape. A characteristic feature of these buildings are the exposed ends of the round wooden beams that support the flat roof.

62254 Las Cruces Town Building

③



290 x 200 x 180 mm
11.4 x 7.9 x 7.1 "

62253 Las Cruces Church

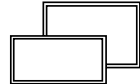
①



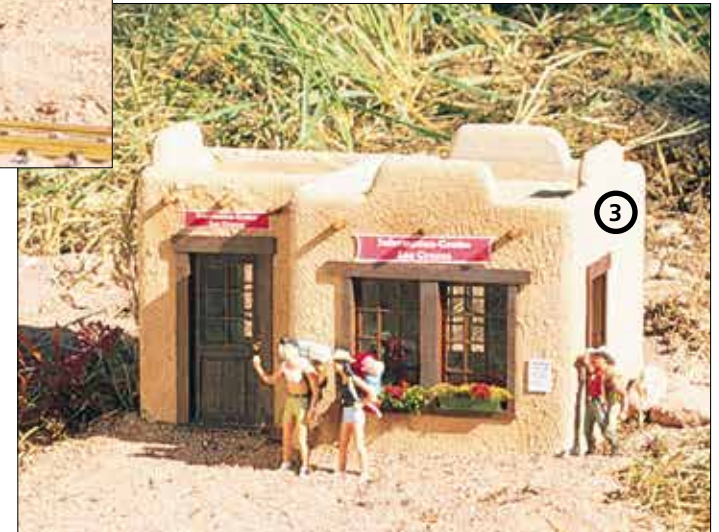
390 x 220 x 330 mm
15.3 x 8.7 x 13.0 "

62252 Las Cruces Train Station

②



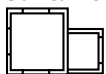
490 x 310 x 240 mm
19.3 x 12.2 x 9.4 "



③



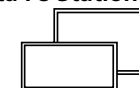
62106 Santa Fe Medical Center



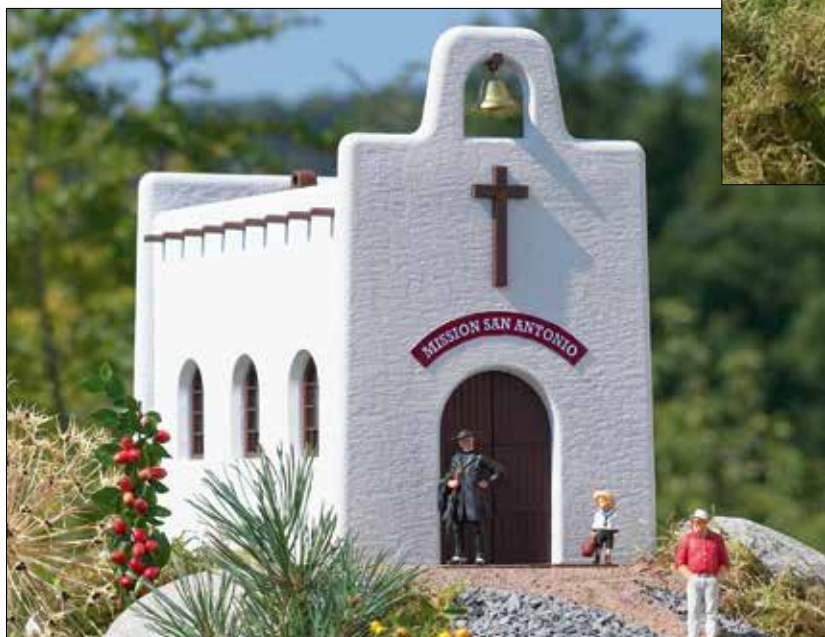
290 x 200 x 180 mm
11.4 x 7.9 x 7.1 "



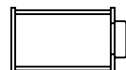
62105 Santa Fe Station



490 x 310 x 240 mm
19.3 x 12.2 x 9.4 "



62108 Mission San Antonio

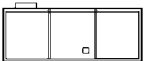


390 x 220 x 330 mm
15.3 x 8.7 x 13.0 "



62014 Brewery Main Section

① You can create a unique brewery complex by combining multiple kits or by adding side buildings. The building sections are weather-resistant and realistically aged. The gate at the main entrance can be opened and closed.




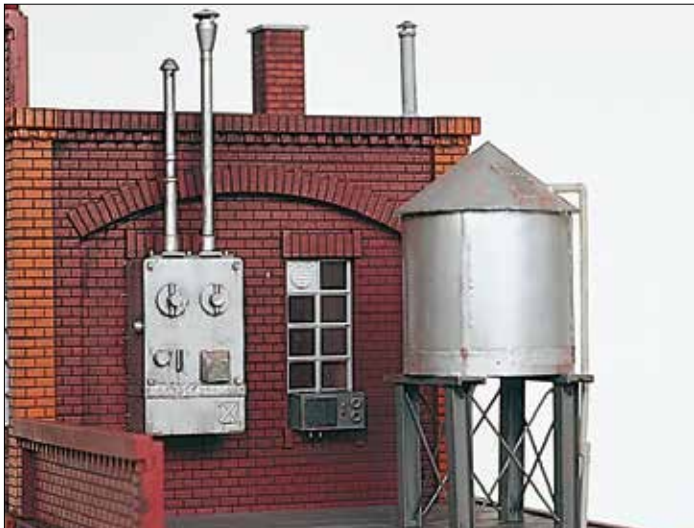
704 x 280 x 500 mm
27.7 x 11.0 x 19.7 "



62289 Factory Gate

② Our big factory gate with its iron doors fits perfectly to the Factory Walls (#62288) and creates an attractive entrance to each industrial setting.

 240 x 42 x 220 mm
10.9 x 9.1 x 8.7 "



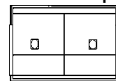
62013 Brewery Equipment

⑦ This accessory kit consists of an airconditioning unit, a ventilation unit and a large tank that stores water for the brewery's sprinkler system. The water tank is a common sight in America.



62015 Brewery Sidebuilding

③ The distinctly shaped roof with the sloping roof windows makes this building particularly interesting. The front gates of this weather-resistant, realistically aged model open.



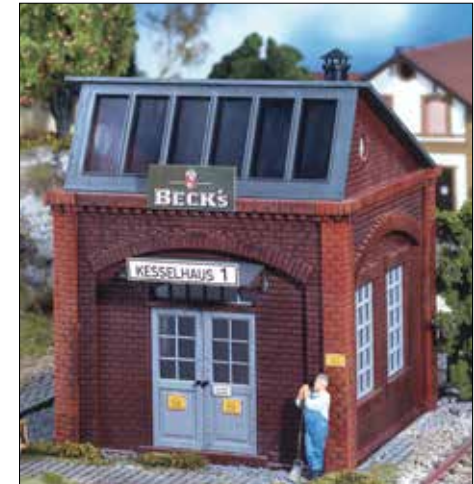
480 x 250 x 297 mm
18.9 x 9.9 x 11.7 "

62016 Chimney

⑤ The matching chimney for our brewery complex takes its stability from its solid base. The chimney itself stands 28.7" tall. A billboard can be attached to the outside.



160 x 160 x 730 mm
6.3 x 6.3 x 28.7



62017 Boilerhouse

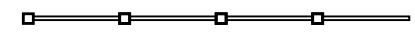
④ The boilerhouse with its shed roof and opening door can also be used as a machine shop or warehouse. Due to its modular construction the building can be extended as needed.



250 x 280 x 297 mm
9.8 x 11.0 x 11.7 "

62288 Brick Factory Walls

⑥ Industrial complexes are often surrounded by brick walls. The enclosed walls and pillars have an overall length of 41.1". They are an excellent fit for PIKO®'s Brewery #62014 or many other industrial buildings. They can be used with the #62289 factory gate.

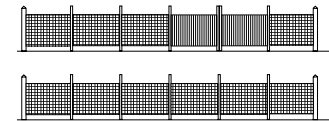


105 x 3,3 x 8,7 cm
41.1 x 1.3 x 3.4 "



62290 Industrial Fence

④ Two sets #62290 are required for completely fencing the depot.



Content: 1 gate, pales, app. 4.6 ft. fence

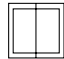
62038 Tank (high)

① Tank, hoch / high:
ř 315 mm
370 mm hoch / high
ř 12.4" x 14.6"

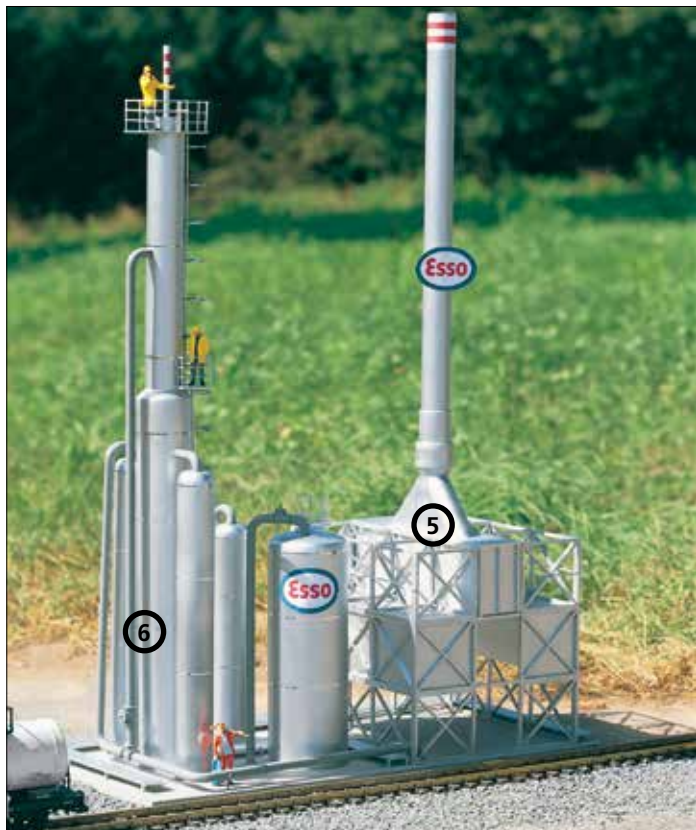
62039 Tank (low)

② Tank, niedrig / low:
ř 315 mm
270 mm hoch / high
ř 12.4" x 10.6"

62037 Depot Office

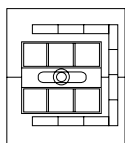
③  240 x 230 x 200 mm
9.5 x 9.0 x 7.9 "

The two diesel tanks are fitted with a railing on top, a fixed ladder to reach the top and a fill pipe. "Exxon" and "Esso" stickers for branding the depot are included in the kit. If necessary the tanks can be put on #62005 baseplates.



62046 Refinery Burn-Off Plant

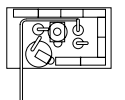
⑤



460 x 534 x 1060 mm
18.1 x 21.0 x 41.7 "

62047 Refinery Cracking Plant

⑥

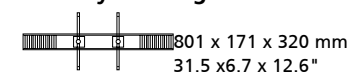


460 x 267 x 1010 mm
18.1 x 10.5 x 39.8 "



62049 Refinery Loading Dock

⑦

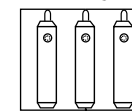


801 x 171 x 320 mm
31.5 x 6.7 x 12.6 "



62048 Refinery Storage Tanks

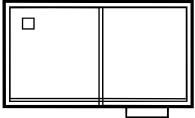
⑧



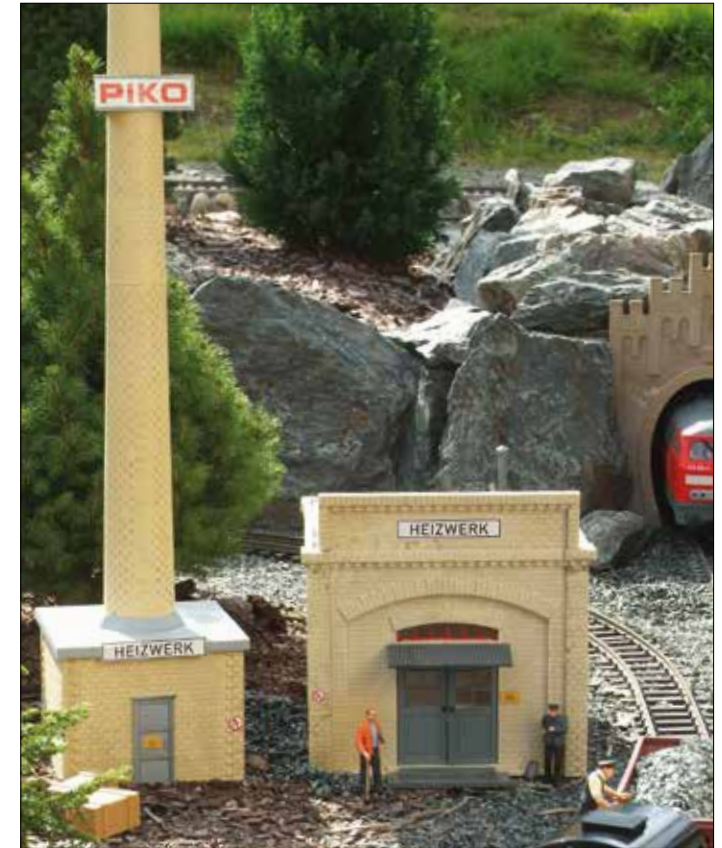
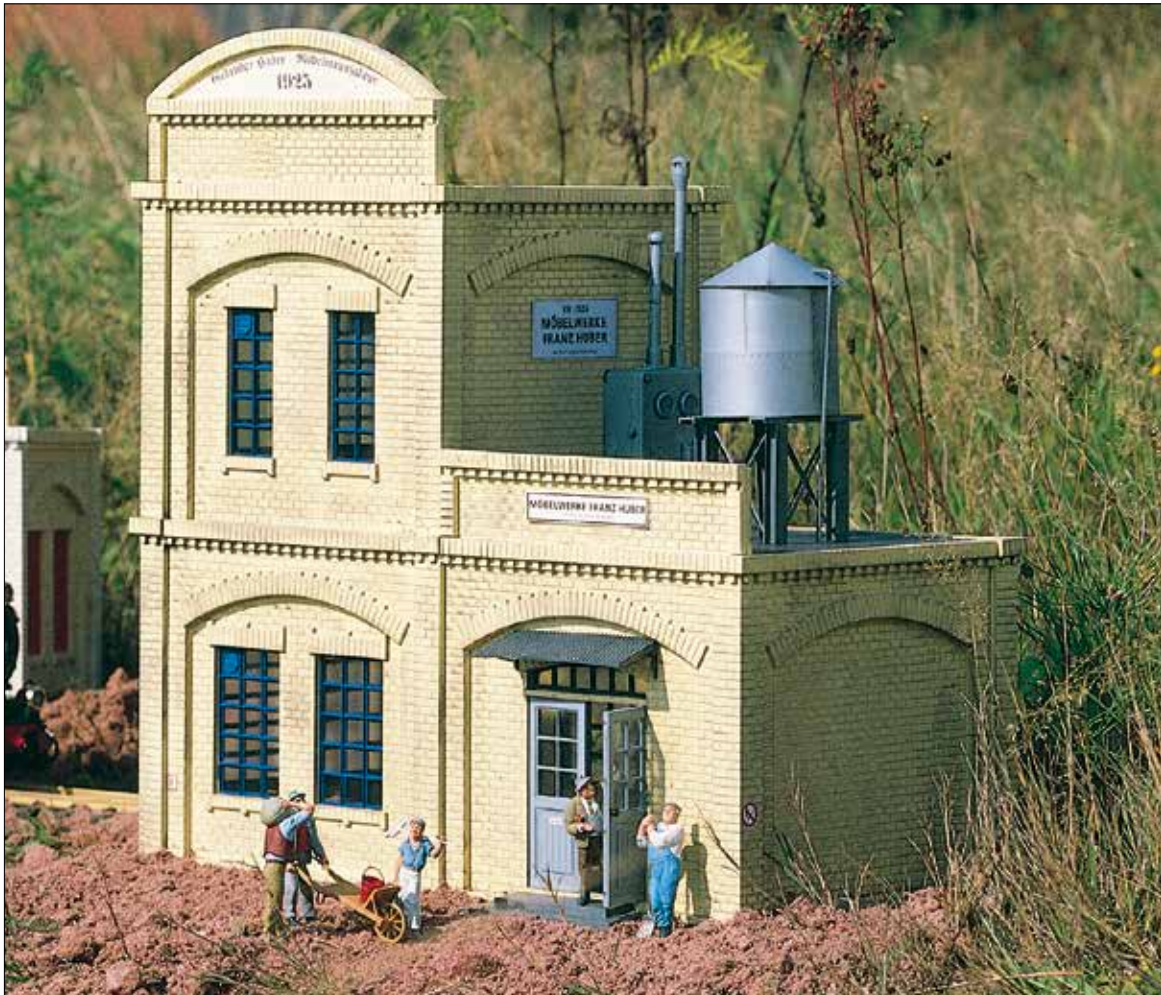
3 tanks included.
267 x 348 x 90 mm
10.5 x 13.7 x 3.6 "
1 tank:
250 x 52 x 80 mm
9.8 x 2.0 x 3.2 "

62019 Mr. Mann's Can Factory

The weather-resistant and realistically aged building is modeled after early 20th century industrial buildings. The doors on this kit can be opened and closed. Thanks to the kit's modular design, several kits can be combined to create an even larger factory building. The factory's exterior color makes it the perfect fit for the Power Substation #62018. The water reservoir and air conditioning unit shown here are from kit #62013 and are not included. We recommend the baseplates #62005 to enhance the model (1 set).



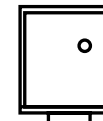
470 x 280 x 500 mm
18.6 x 11.0 x 19.7 "



62018 Power Substation



Chimney: 6.3 x 6.3 x 28.7 "



Power Station: 9.8 x 11.0 x 11.7 "

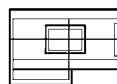


62011 Automatic Loader for Gravel Works

- ① Place the gravel in the main building's #62009 gravel container. From there it can be loaded into railcars by using the motor driven automatic loading unit. (not visible in this photo)

62009 Gravel Works Main Building

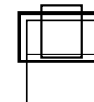
- ③ The gravel work's main building stands on a masonry base with windows. The loading and unloading can be monitored from the small annex. The main building can be extended with the Side Building #62010, and the Automatic Loader #62011, to enable realistic operation.



500 x 200 x 515 mm
19.7 x 7.9 x 20.3 "

62010 Gravel Works Side Building

- ② This addition simulates a housing for a conveyer to lift gravel up to the main building.

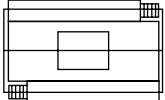


225 x 270 x 370 mm
8.8 x 10.6 x 14.6 "



62034 Co-Op Warehouse

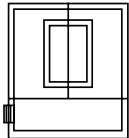
- ① The building can be set up on its own or in conjunction with the storage tower #62035. We recommend the baseplates #62005 to enhance the model (1 set).



526 x 280 x 330 mm
20.7 x 11.1 x 13.0 "

62035 BayWa Storage tower

- ② Besides the "BayWa" decals the kit includes decals to create a "Raiffeisen" building. The building can be set up on its own or in conjunction with the warehouse #62034. We recommend the set of baseplates #62005 to enhance the model (1 set).



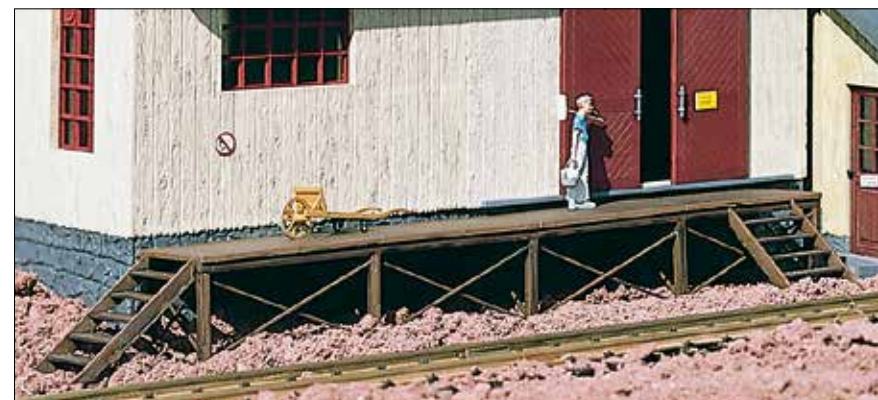
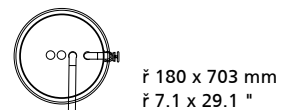
360 x 310 x 800 mm
14.2 x 12.2 x 31.5 "





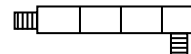
62036 Co-Op Silo

The kit contains one silo and the necessary piping.



62287 Loading Dock for Goods Shed

2 sets of stairs and 4 platform sections.



515 x 145 x 60 mm
20.3 x 5.7 x 2.4 "



62064 Gramss Baker's Shop

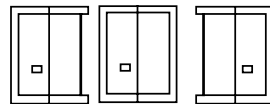
①

62065 Bauer's Florist's Shop

②

62066 Dr. Lang's Practice

③



Size for:
#62064, #62065, #62066:
160 x 210 x 285 mm
6.3 x 8.3 x 11.2 "

Size for:
#62067, #62068:
160 x 210 x 320 mm
6.3 x 8.3 x 12.6 "



62068 Gunilla's Hair Salon

④

62067 Sunny Pharmacy

⑤



Garden Town Series

The buildings in the Garden Town Series with their lovingly designed details can be used either as single units or in conjunction with each other to create the idyllic atmosphere of a small town or a particular street. With the exception of a few individual parts the buildings can be assembled without glue.



62057 Beate's Pottery

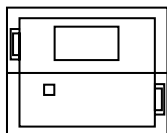
This lovingly detailed home is accompanied by a market stand stocked with pieces of pottery. The front door can be opened and closed. We recommend the set of baseplates #62005 to enhance the model (1 set).



240 x 290 x 250 mm
9.4 x 11.4 x 9.8 "



62053 Frank's Timbered House

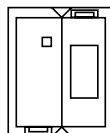


360 x 290 x 345 mm
14.2 x 11.4 x 13.6 "



62050 Dr. König's House

Dr. König and his family live in this little half-timbered home with hipped roof. Many accessories such as flower boxes and the newspaper holder, as well as the detailing on the building, make this home a showpiece for any layout. The front door can be opened.



360 x 290 x 345 mm
14.2 x 11.4 x 13.6 "

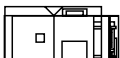
We recommend the set of baseplates #62005 to enhance the model (1 set).



62051 Rosenbach Watermill

Decorative timberwork and a hipped roof make the old watermill with its fully operational water wheel an idyllic sight on your garden layout. The building has two opening doors and many accessories such as window boxes and a newspaper holder as well as many other details. The water wheel can be motor-driven. We recommend the Water Wheel Motor #62052.

326 x 345 x 370 mm
12.8 x 13.6 x 14.6 "



62052 Water Wheel Motor

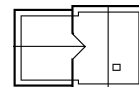
In case the water wheel on your layout cannot be driven by running water, this robust electric motor can drive the water wheel. The kit includes the motor itself as well as all necessary parts for its installation.



62022 Beer Garden Café

With its bright attractive colors, pretty flower boxes, maypole, tables, and benches in the idyllic garden, the Beer Garden Cafe invites customers to linger. A scene which forms a romantic feature on any layout. The doors of the weather-resistant and partially aged model open. Benches and picnic tables are included in this kit.

We recommend the set of baseplates #62005 to enhance the model (1 set).



370 x 240 x 240 mm
14.6 x 9.4 x 9.4 "

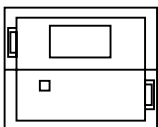
62282 Beer Garden Tables and Benches

This kit can be used to extend the beer garden of the "Beer Garden Café" #62022 or any other garden as desired. The kit includes three tables, six benches and three garden seats.



62072 House under construction

Some of the walls have already been repainted as can be seen by the difference in color. The weather resistant kit includes scaffolding and fence sections. The doors can be opened and closed.

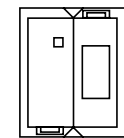


360 x 290 x 345 mm
14.2 x 11.4 x 13.6 "

We recommend the set of baseplates #62005 to enhance the model (1 set).



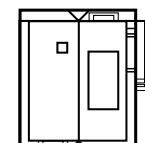
62073 Brenda's Brick House



360 x 290 x 345 mm
14.2 x 11.4 x 13.6 "



62058 Old Mill



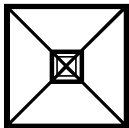
326 x 345 x 370 mm
12.8 x 13.6 x 14.6 "

Water mill motor #62052 on page 148



62117 Fresh Produce Stand

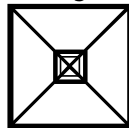
①



150 x 150 x 182 mm
4.9 x 4.9 x 7.4 "

62118 Sausage Shop

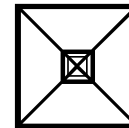
②



150 x 150 x 182 mm
4.9 x 4.9 x 7.4 "

62119 Cheese Shop

③



150 x 150 x 182 mm
4.9 x 4.9 x 7.4 "

The weekly farmers market has a number of small booths where people buy produce and other groceries. (Figures and accessories not included.)
The doors of the weathered booths can be opened and closed.



62293 Work Shop Accessory Set



62294 Softdrink Crates



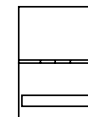
62284 Old-fashioned Petrol Pump, Yellow (Not Shown)
The ready-made kit includes a radiator water can, tire racks and replacement tires.



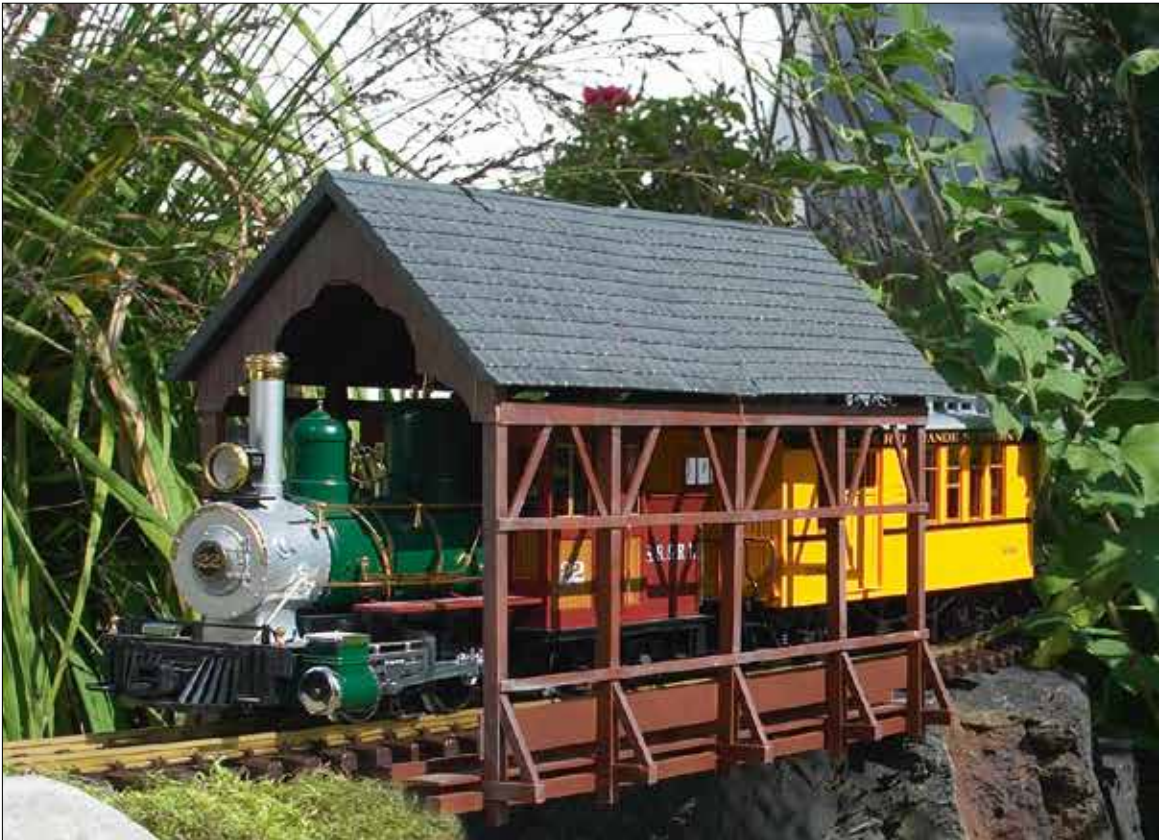
62286 Antique Gasoline Pump "Texaco"
① Addition to #62264. The ready-made kit includes a radiator water can, tire racks and replacement tires.

62264 "Texaco" Gas Station

②

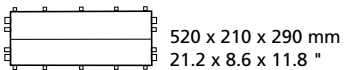


210 x 280 x 220 mm
11.2 x 8.3 x 8.7 "



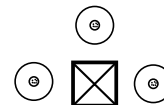
62116 Covered Bridge

The classic covered bridge is a well-known symbol of days gone by in America. This PIKO model captures all the charm of the original. The bridge deck is ready for easy installation of your track.
Note: Check vertical clearance of rolling stock before assembling the bridge. Bridge has limited overhead clearance and the decorative end panels can be left off to provide extra clearance.



Kiosk
 150 x 150 x 170 mm
 5.9 x 5.9 x 6.7 "

Teepee
 190 x 190 x 300 mm
 7.7 x 7.7 x 12.2 "



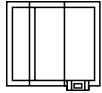
62111 Trading Post

The trading post and three teepees form quite a tourist attraction. Locally made jewelry and souvenirs are offered here. The door can be opened and closed. Teepees pictured below

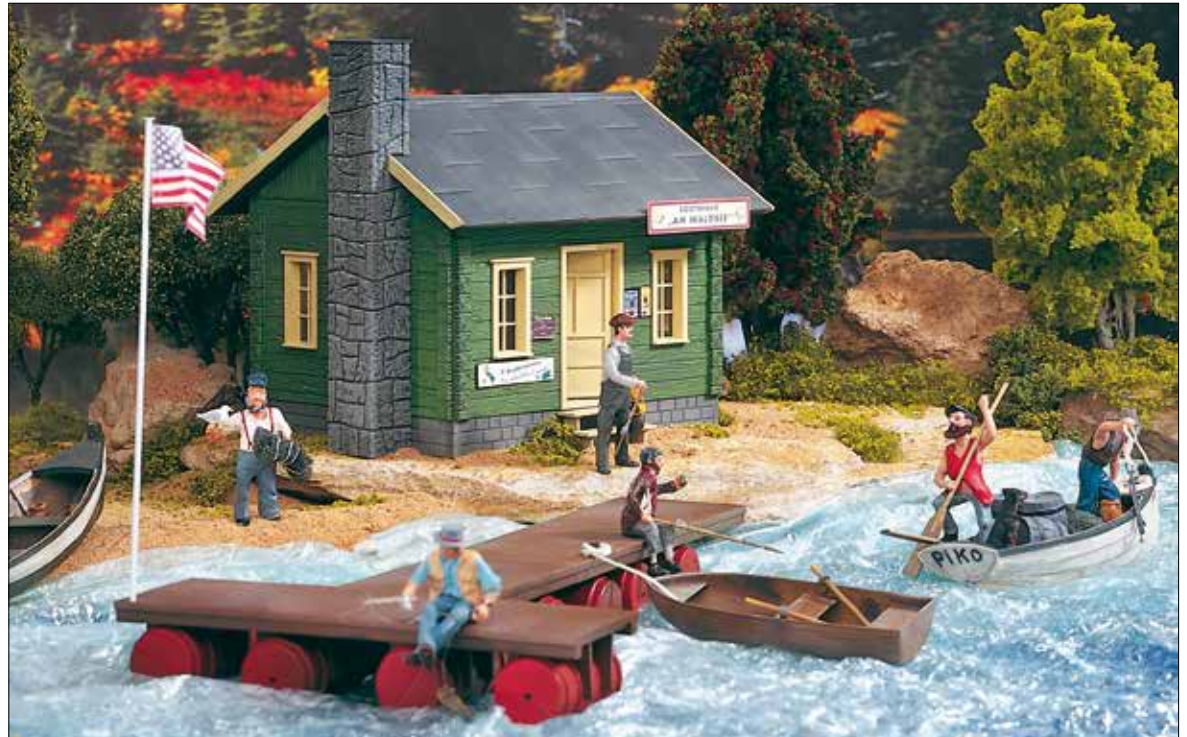




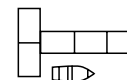
62104 Dr. Reynolds Country Home



280 x 260 x 230 mm
11.0 x 10.2 x 9.1 "



62103 Bait & Tackle Shop



House:
254 x 230 x 230 mm
10.0 x 9.1 x 9.1 "



Pontoon Dock:
400 x 220 x 45 mm
15.7 x 8.7 x 1.8 "

62283 Rowing Boat

The little boat is a perfect addition to the "Bait & Tackle Shop" kit #62103. Color may vary from photo.



62012 Gazebo

The gazebo's roof is supported by 12 columns. Flower-pots and flower material for the pots are included. The gazebo is weather-resistant and is a great attraction on any layout.

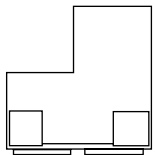


270 x 270 x 250 mm
10.6 x 10.6 x 9.8 "



62242 Fire-Department No. 6

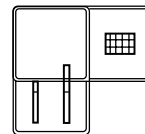
The fire station can often be found near the railroad station. With two large moveable doors, windows with gratings and the sturdy stone surfacing, the building provides sufficient space for the firefighters and the fire engine.



420 x 390 x 310 mm
16.5 x 15.4 x 12.2 "



62251 Filling Station



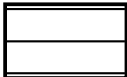
420 x 390 x 310 mm
16.5 x 15.4 x 12.2 "



62120 White Barn

Once a common sight along American highways and byways, barns – and their roofs – were used to advertise many things, such as fireworks for sale at the next exit.

The doors of the barn open. The kit includes two different style roofs and signs in English as well as in German.



260 x 400 x 280 mm
10.2 x 15.7 x 11.0 "



62110 Red Barn



400 x 400 x 280 mm
15.7 x 15.7 x 11.0 "

62291 White Wooden Fence

The white wooden fence is 63 " (160 cm) long. It can be arranged in a straight line or around a yard with 90° corners.





Original Layout: Ron Gibson

62222 Fire Post

Lookouts like this are used throughout North America to monitor forests for wildfires. The observation platform sits atop a finely detailed timber frame with integrated wooden staircase. The Fire Post is weather-resistant and realistically aged.

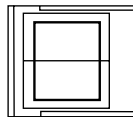


220 x 220 x 720 mm
8.7 x 8.7 x 28.3 "



62112 Old Fallsington Feed and Seed Company

Henry Fallsington prefers to take life easy, sitting back in his rocking chair rather than loading railroad cars spotted at the elevated platform or working in the office of his little warehouse. (Rocking chair #62295 not included) The door of this aged model can be opened and closed.



Platform:
340 x 285 x 225/170/125 mm
13.9 x 11.6 x 9.2/6.9/5.1 "
Building:
240 x 230 x 175 mm
9.8 x 9.4 x 7.1 "

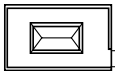
62295 Rocking Chairs (Set of 2)

There's nothing like leaning back in a comfortable old rocking chair. Your G-Scale figures will enjoy a relaxing break on a patio or porch. (Figures not included)



62262 Brad's fishing cabin

Brad built his cabin over the lake to be closer to the water. He stores his fishing rods inside the little cabin with opening doors. During weekends he enjoys the peace and quiet.

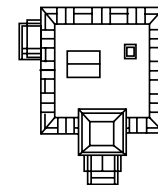


410 x 210 x 180 mm
16.2 x 8.3 x 7.1 "



62054 German Embassy

The German Embassy is situated in an old empire style building with red bricks, slate roof and sand stone window sills. The two opening doors with their small porches, the bay windows and the decorated window sills make the building stand out. The distinctive building fits in no matter what the theme of your layout is. We recommend the baseplates #62005 to enhance the model (1 set).



450 x 370 x 505 mm
17.7 x 14.6 x 19.9 "

62223 "Black Hill" Saloon

With the functional swing door and large balcony, that stretches across the entire front, the building is a typical US-Western-Saloon. The weather-resistant building has been realistically weathered.

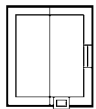


400 x 300 x 360 mm
15.7 x 11.8 x 14.2 "



62224 Pony Express Cabin

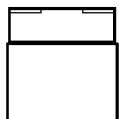
①



254 x 230 x 230 mm
10.0 x 9.1 x 9.1 "

62225 City Sheriff

②



220 x 224 x 210 mm
8.7 x 8.8 x 8.3 "

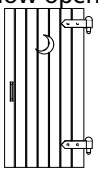


We recommend the set of baseplates #62005 to enhance the model (1 set).



62246 Outhouse

This kit is a realistic model of a typical outhouse, once a quite common necessity! The door with the customary heart shaped window opens.



The kit includes a second door with a half moon window for the US.



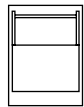
60 x 70 x 110 mm
2.4 x 2.8 x 4.3 "



62247 Stable

The small ranch stable finds room next to almost any country home. It can easily house a horse or a cow while the back has room to store a small tractor or a car.

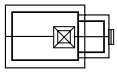
We recommend the baseplates #62005 to enhance the model (1 set).



340 x 250 x 135 mm
13.4 x 9.8 x 5.3 "

62229 Country Church

This attractive church with its picturesque little bell tower and porch is an ideal addition to Sam's and Aunt Bea's home. The weather-resistant and slightly weathered model creates a truly American atmosphere. The doors can be opened and closed. We recommend the baseplates #62005 to enhance the model (1 set).



150 x 315 x 360 mm
5.9 x 12.4 x 14.2 "

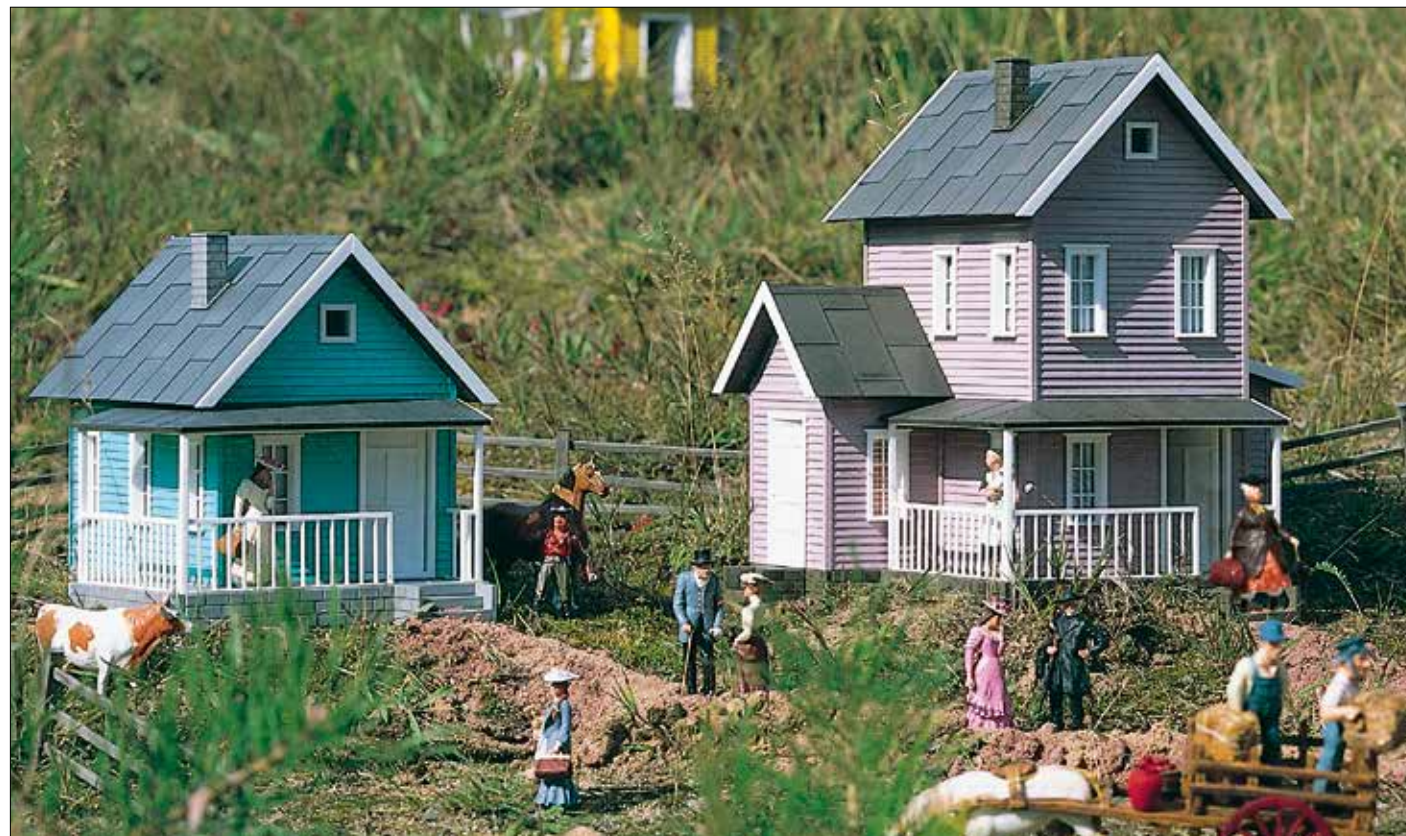




62221 "Aunt Bea's" Farmhouse



250 x 350 x 315 mm
9.9 x 13.8 x 12.4 "



62249 Cousin Jane's Farmhouse

Typical US-style country home with front porch. The weather-resistant kit is partially aged and has opening doors.

We recommend the set of baseplates #62005 to enhance the model (1 set).



300 x 210 x 235 mm
11.8 x 8.2 x 9.3 "

62248 Grandpa's Farmhouse

This traditional home is built in typical American wood-sided style. Homes like it can be found all across the United States. The doors of the weather-resistant and partially aged model can be opened and closed. We recommend the baseplates #62005 to enhance the model (1 set).



250 x 350 x 315 mm
9.9 x 13.8 x 12.4 "



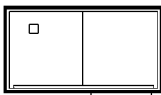
62226 "Sam's" House



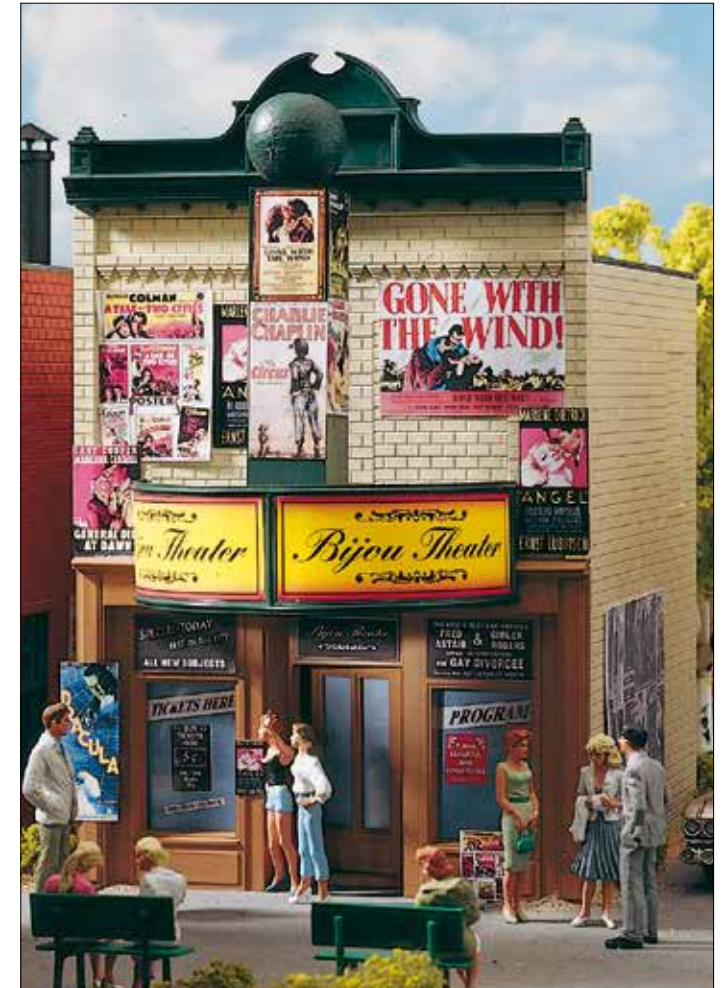
300 x 210 x 235 mm
11.8 x 8.2 x 9.3 "



62208 "Bill's" Body Shop

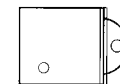


510 x 250 x 260 mm
22.4 x 9.8 x 10.2 "

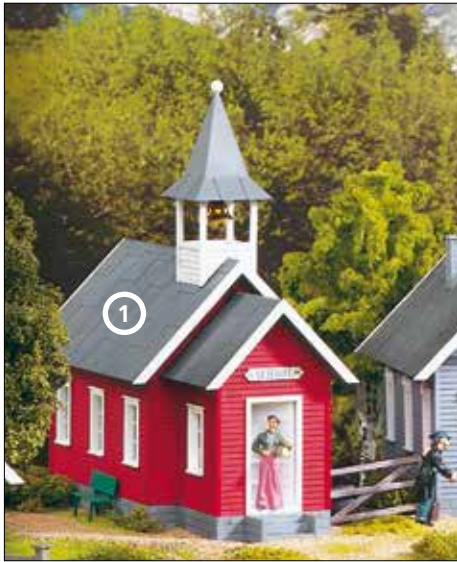


62233 Bijou Theater

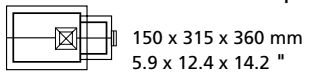
Many old movie posters and ads recreate the typical cinema of the thirties. The doors of this weather-resistant and partially aged building can be opened and closed.



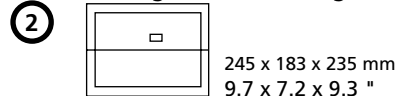
360 x 290 x 345 mm
14.2 x 11.4 x 13.6 "



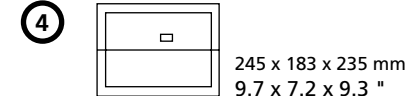
62243 Little Red School House
 ① The attractive little bell tower housing the brass school bell and the strong dark red exterior paint make the building the focal point of any rural garden railroad scene. The door can be opened.



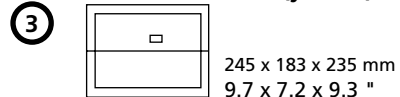
62238 R. King's House (mint green)



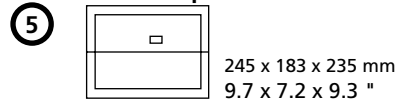
62240 M. Lewis' House (lavender)



62239 B. Adams' House (yellow)



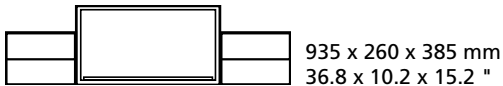
62256 Craft Shop



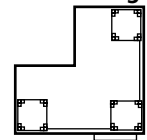


62028 Union Station

The Union Station has platform roofs on each end of the building. A working PIKO clock adorns the front of the building. The station doors open. Benches are included in this kit.



62114 White Knight Hamburgers



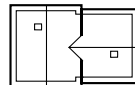
480 x 480 x 355 mm
18.9 x 18.9 x 14.0 "



62078 Mel's Fix-it Shop

Modest but sturdy brick home with attached storage shed for ladders and equipment. The doors of this model can be opened. The scaffolding is included.

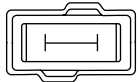
We recommend the baseplates #62005 to enhance the model (1 set).



370 x 240 x 240 mm
14.6 x 9.4 x 9.4 "



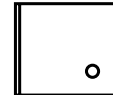
62259 Peter's Motorcycle Maintenance Shop



374 x 190 x 225 mm
14.7 x 7.5 x 8.9 "



62258 Dora's Bakery Shop

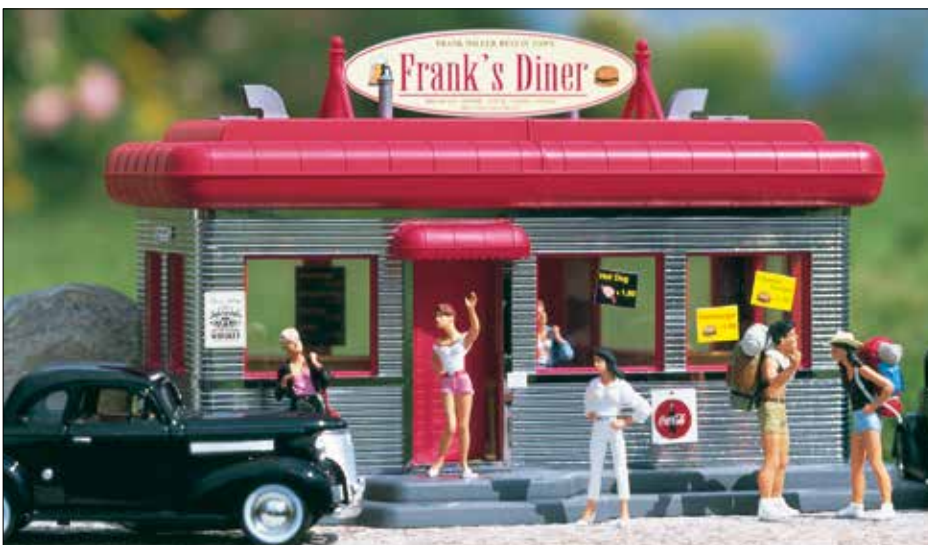


220 x 240 x 305 mm
8.7 x 9.4 x 12.0 "

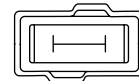
62257 Farmer's State Bank



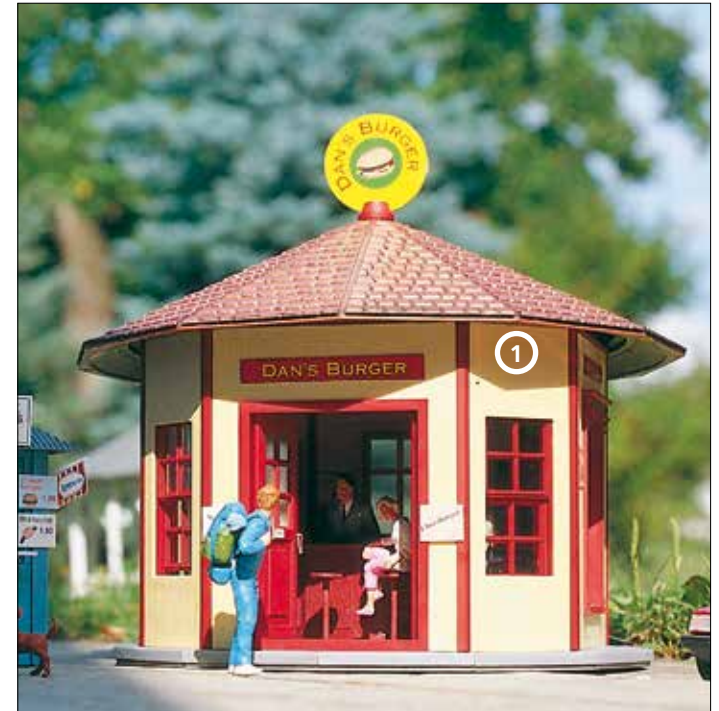
220 x 240 x 305 mm
8.7 x 9.4 x 12.0 "



62250 Downtown Diner



374 x 190 x 225 mm
14.7 x 7.5 x 8.9 "



62227 "Dan's" Burger

①



270 x 270 x 253 mm
10.6 x 10.6 x 10.0 "

62266 Michael's Emporium

②



220 x 240 x 460 mm
8.7 x 9.4 x 18.1 "

62267 Hudson's Home Goods

③

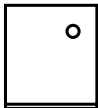


220 x 240 x 430 mm
8.7 x 9.4 x 16,9 "



62219 "David's" Barber Shop

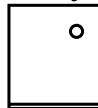
④



220 x 240 x 305 mm
8.7 x 9.4 x 12.0 "

62204 "Jenny's" Clothing

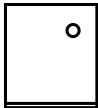
⑥



220 x 240 x 345 mm
8.7 x 9.4 x 13.6 "

62220 "Paul's" Dry Goods

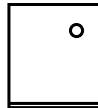
⑤



220 x 240 x 305 mm
8.7 x 9.4 x 12.0 "

62207 "Dr. Goldstein's" Pharmacy

⑦



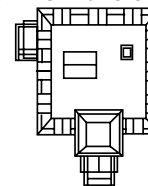
220 x 243 x 330 mm
8.7 x 9.6 x 13.0 "

Buildings such as this two-story brick store were built around the turn of the 20th century and to this day can be found all across North America. The typical sliding windows and the doors open. The kit is weather-resistant and partially aged.

We recommend the set of wooden sidewalks #62281.



62023 The Mansion



450 x 370 x 505 mm
17.7 x 14.6 x 19.9 "

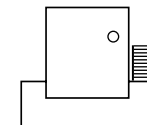


From an original model designed by Andrew de Lucia, El Dorado Hills, CA

62260 California Hotel

The guests reach the hotel's upper floors via outside stairways that give the building its distinctive look. Built in the architectural style of the early 20th century this hotel is suitable for many types of Western style layouts.

The kit includes base plates.



370 x 320 x 450 mm
14.6 x 12.6 x 17.7 "

PLEASANTOWN COLLECTION

The Pleasantown Collection Buildings can be assembled and disassembled easily due to their unique "pin" connector system.

62236 A.C.M.E. Hardware Store

①

62237 Leather Goods & Boots

②

62235 A.C.M.E. Liquor Store

③

62234 General Store

④

62218 Saloon

⑤

62217 Dentist

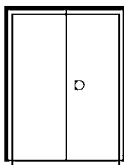
⑥

62215 White Schoolhouse

⑦

62216 Sheriff's Office

⑧



Measurements of all buildings:
141 x 202 x 250 mm
5.6 x 8.0 x 9.8 "





PLEASANTOWN COLLECTION

62214 Fire Station N° 9

⑨

62213 Post Office

⑩

62212 Sandy's Candies

⑪



PLEASANTOWN QWIK-KITS

The Qwik-Kit buildings come partially assembled, to give beautiful results in almost no time.

Windows, doors, signs and details are already installed.

62721 Music Shop

⑫

62722 Village Furniture

⑬

62723 Daily Grind Coffee House

⑭

62724 Book Worm Book Shop

⑮

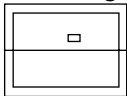
Baseplate not included. We recommend the set of baseplates #62005 or the wooden sidewalks #62281 to enhance the model.

BUILT-UP MODELS

PIKO Built-Up models come factory-assembled, with signs installed. In a few instances, certain parts may require simple final assembly, for safe transport in the package.

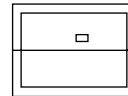


62707 Hill's Gingerbread House, Built-Up



245 x 183 x 235 mm
9.7 x 7.2 x 9.3 "

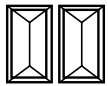
62708 Washburn's Gingerbread House, Built-Up



245 x 183 x 235 mm
9.7 x 7.2 x 9.3 "



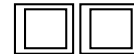
62718 Railroad Tool Shed 2-Pack, Built-Up



90 x 160 x 130 mm
3.5 x 6.3 x 5.1 "



62719 Outhouse 2-Pack, Built-Up



60 x 70 x 110 mm
2.4 x 2.8 x 4.3 "



Figures and accessories not included.

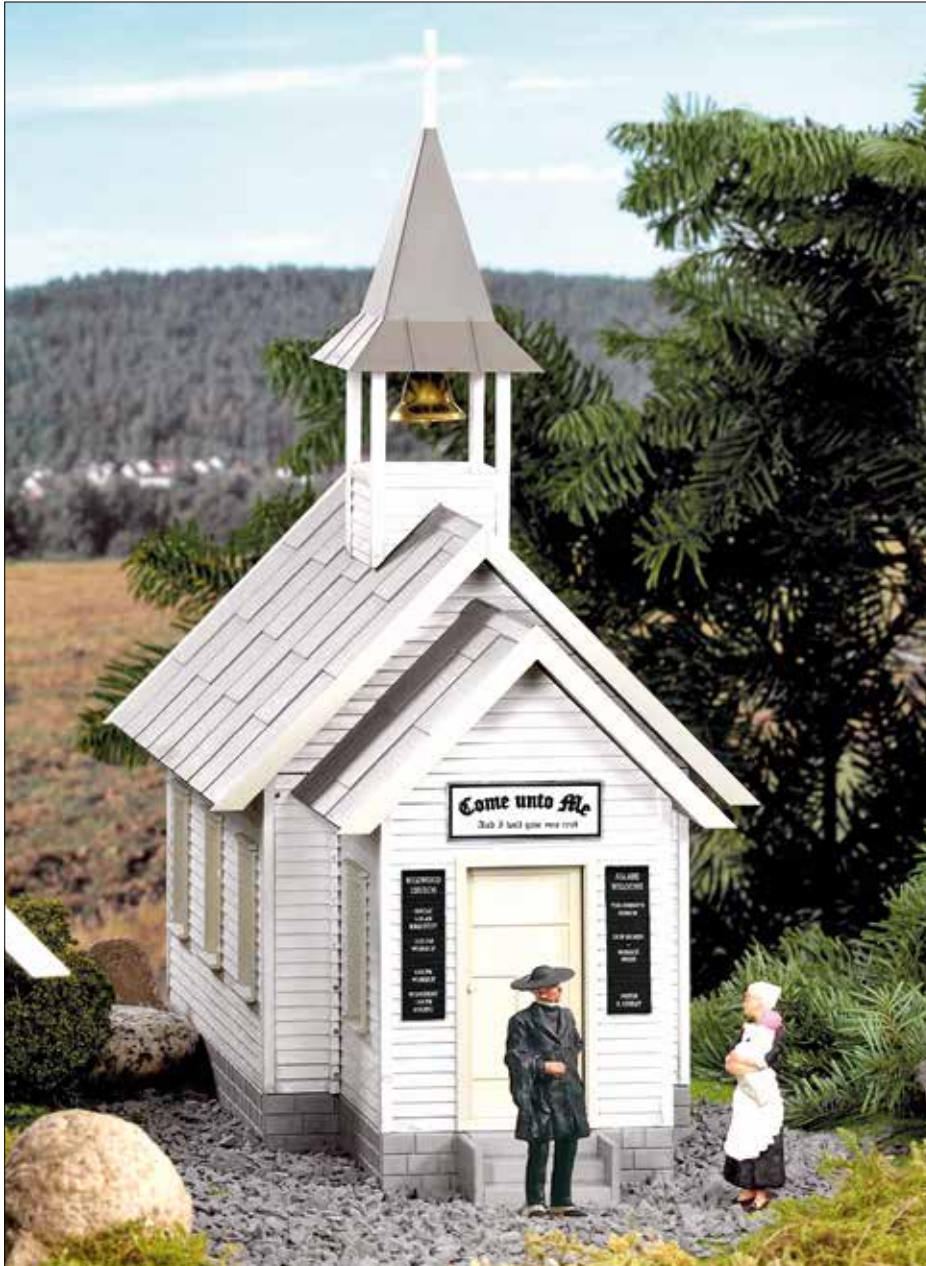
62725 Joe's Shoe Repair, Built-Up



240 x 230 x 200 mm
9.5 x 9.0 x 7.9 "

BUILT-UP MODELS

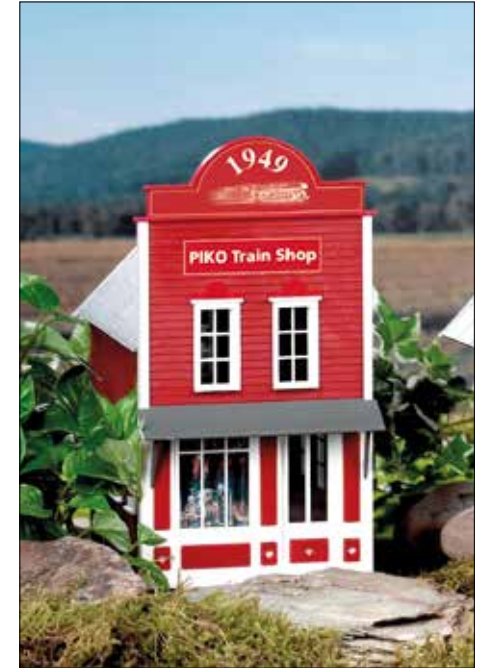
PIKO Built-Up models come factory-assembled, with signs installed. In a few instances, certain parts may require simple final assembly, for safe transport in the package.



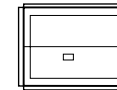
62726 River City, Buffalo Bill's Barber Shop, Built-Up



141 x 202 x 240 mm
5.6 x 8.0 x 9.5 "



62705 PIKO Train Shop, Built-Up

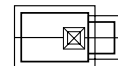


141 x 202 x 250 mm
5.6 x 8.0 x 9.8 "

62706 Wildwood Church, Built-Up

This attractive church with its picturesque little bell tower and porch is an ideal addition to any layout. The weather-resistant and slightly weathered model creates a truly American atmosphere. The doors can be opened and closed.

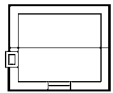
We recommend the baseplates #62005 to enhance the model (1 set).



150 x 315 x 360 mm
5.9 x 12.4 x 14.2 "



62716 River City Tommy's Cabin, Built-Up



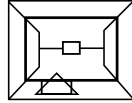
254 x 230 x 230 mm
10.0 x 9.1 x 9.1 "



62700 Green River Station, Built-Up

①

The station comes pre-assembled. It can be disassembled easily and is weather-resistant as well as partially aged. The doors open.



215 x 175 x 205 mm
8.5 x 6.9 x 8.1 "

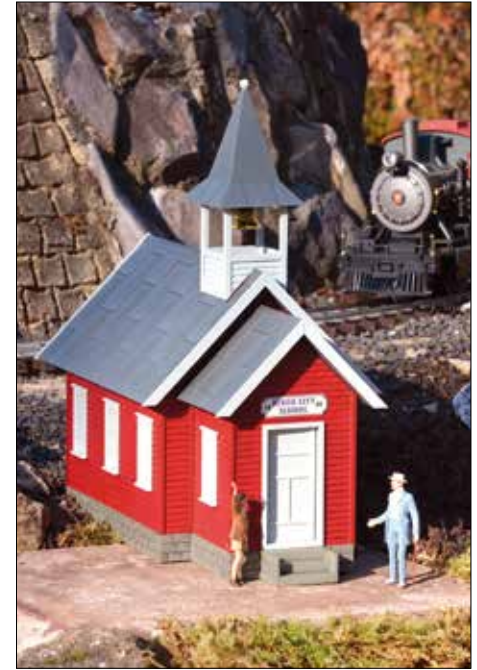
62701 Old West Water Tower, Built-Up

②

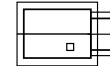
Built-Up model. The tank can be filled with water and emptied via the spout.



170 x 170 x 270 mm
6.7 x 6.7 x 10.6 "



62717 River City School House, Built-Up



150 x 315 x 250 mm
5.9 x 12.4 x 9.8 "

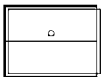
BUILT-UP MODELS

PIKO Built-Up models come factory-assembled, with signs installed. In a few instances, certain parts may require simple final assembly, for safe transport in the package.



62714 River City Squires' Livery, Built-Up

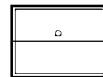
①



141 x 202 x 250 mm
5.6 x 8.0 x 9.8 "

62715 River City Shinn's Billiard Parlor, Built-Up

②

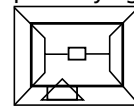


141 x 202 x 250 mm
5.6 x 8.0 x 9.8 "

62709 River City Station, Built-Up

③

The station comes pre-assembled. It can be disassembled easily and is weather-resistant as well as partially aged. The doors open.

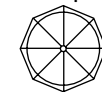


215 x 175 x 205 mm
8.5 x 6.9 x 8.1 "

62710 River City Water Tower, Built-Up

④

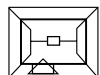
Built-Up model. The tank can be filled with water and emptied via the spout.



170 x 170 x 270 mm
6.7 x 6.7 x 10.6 "



62265 North Pole Station, Built-Up



215 x 175 x 205 mm
8.5 x 6.9 x 8.1 "

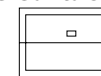
62702 North Pole Water Tank, Built-Up



170 x 170 x 270 mm
6.7 x 6.7 x 10.6 "



62703 Santa's House, Built-Up



183 x 245 x 235 mm
7.2 x 9.7 x 9.3 "

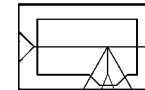


62814 Set of Icicles

2 pcs. 282 x 39 mm
2 pcs. 207 x 30 mm
8 pcs. 62 x 36 mm



62268 ChristmasTown Station, Building Kit

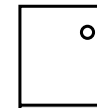


485 x 310 x 290 mm
19.1 x 12.2 x 11.4 "



62269 ChristmasTown Ornament Factory, Building Kit

①



220 x 240 x 305 mm
8.7 x 9.4 x 12.0 "

62268 ChristmasTown Candle Shoppe, Building Kit

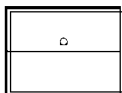
②



220 x 243 x 330 mm
8.7 x 9.6 x 13.0 "



The Pleasantown Collection Buildings can be assembled and disassembled easily due to their unique "pin" connector system.



Measurements of all buildings:
141 x 202 x 250 mm
approx. 5.6 x 8.0 x 9.8 "

62200 Santa's Work Shop



62201 Robin's Toy Shop



62202 The Village Inn



62203 St. Thomas Church



A brass bell is included.

62800 - 62813 G Construction elements

In order to provide creative G scale enthusiasts with the means of kitbasing their own imaginative designs, PIKO offers the a variety of individual building parts.

62800	Doors	2 x A	218 x 206 mm	8.6 x 8.1 "
		2 x B	45 x 110 mm	1.8 x 4.3 "
		2 x C	76 x 101 mm	3.0 x 4.0 "
62801	Metal Roof	4 x	224 x 240 mm	8.8 x 9.5 "
62802	Shingle Roof	2 x	475 x 198 mm	18.7 x 7.8 "

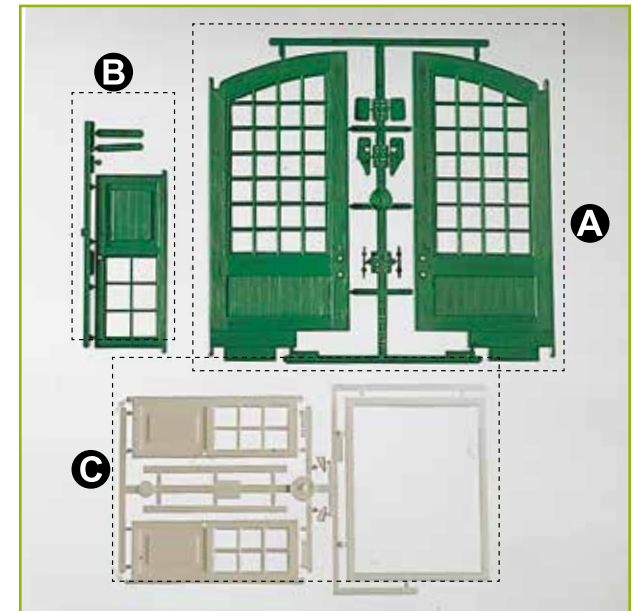
62801 Metal Roofs



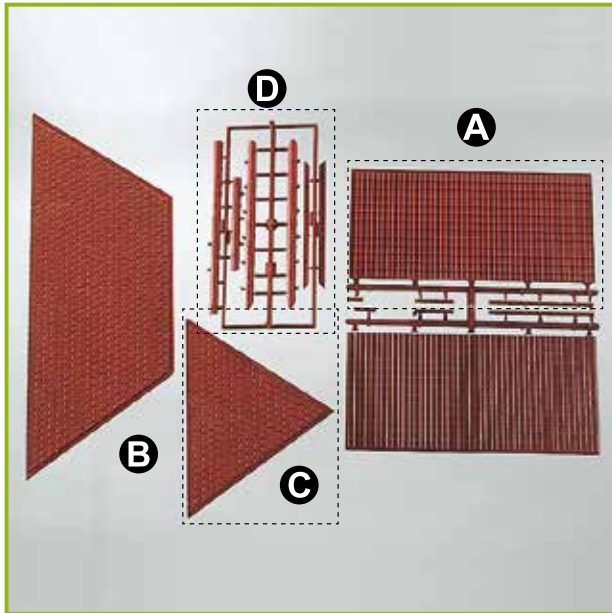
62802 Shingle Roof



62800 Doors

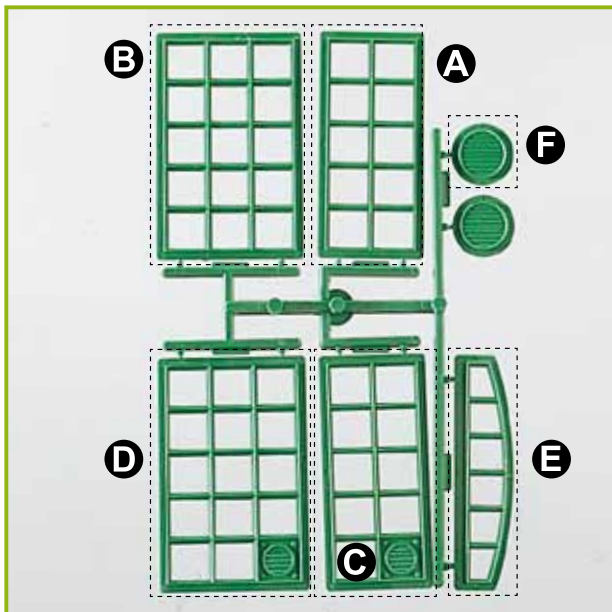


62803 Tiled Roofs

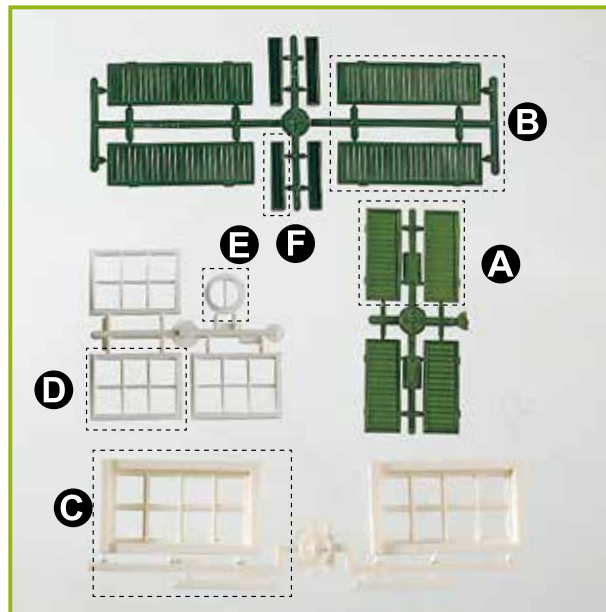


62803	Tiled Roofs	2 x A 2 x B 2 x C 2 x D	287 x 137 mm 455 x 172 mm 235 x 172 mm	11.3 x 5.4 " 17.9 x 6.8 " 9.3 x 6.8 "
62804	Windows of Brewery	3 x A 3 x B 3 x C 3 x D 3 x E 6 x F	44 x 96 mm 60 x 96 mm 44 x 96 mm 60 x 96 mm 95 x 27 mm Ø 26 mm	1.7 x 3.8 " 2.4 x 3.8 " 1.7 x 3.8 " 2.4 x 3.8 " 3.8 x 1.0 " Ø 1.0 "
62805	Windows and Shutters	6 x A 4 x B 4 x C 6 x D 2 x E 8 x F	19 x 49 mm 22 x 76 mm 48 x 82 mm 35 x 48 mm Ø 21 mm 36 x 7 x 7 mm	0.8 x 1.9 " 0.9 x 3.0 " 1.9 x 3.2 " 35 x 48 " Ø 0.8 " 1.4 x 0.3 x 0.3 "
62806	Sliding Windows and Door	2 x A 4 x B 8 x C	42 x 98 mm 38 x 50 mm 38 x 38 mm	1.7 x 3.9 " 1.5 x 2.0 " 1.5 x 1.5 "

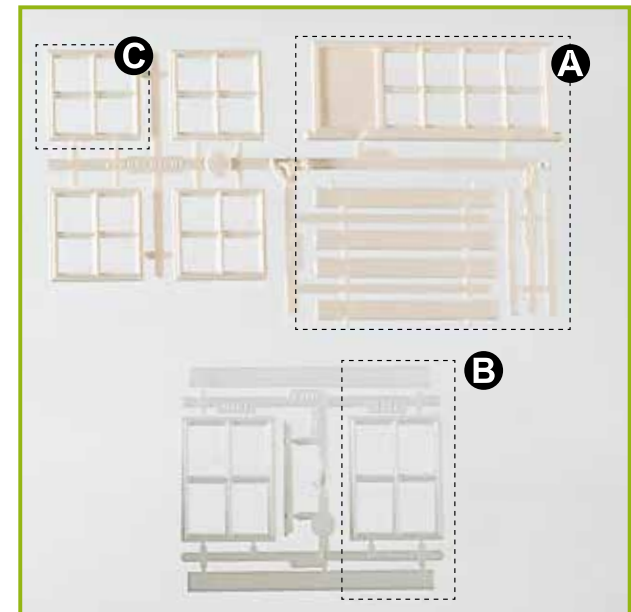
62804 Windows of Brewery



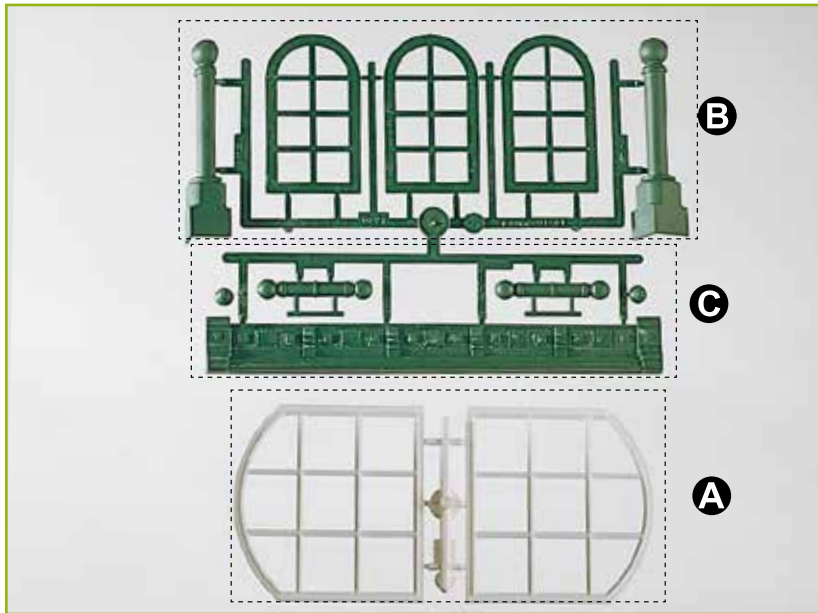
62805 Windows and Shutters



62806 Sliding Windows and Door

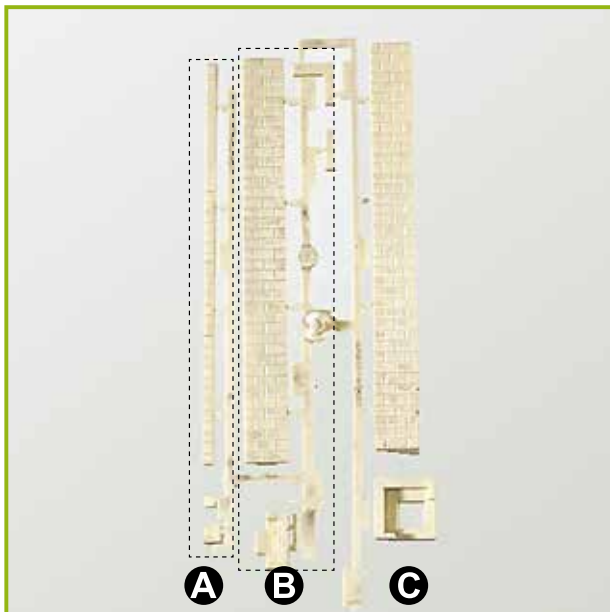


62807 Round Arch Windows

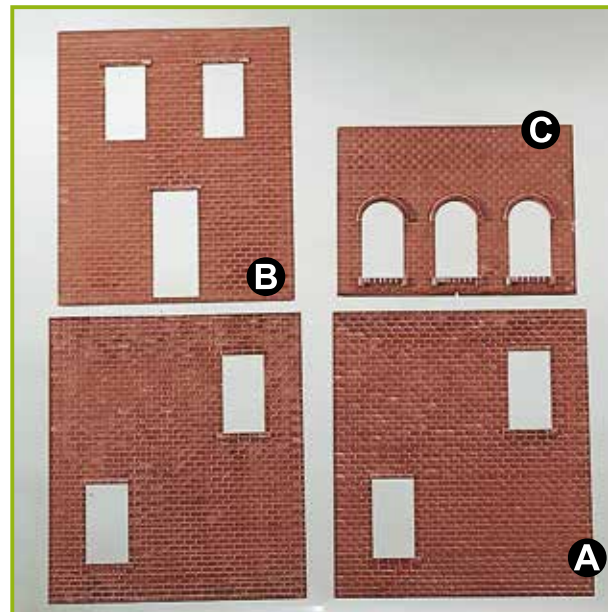


62807	Round Arch Windows	2 x A 1 x B 1 x C	94,5 x 90 mm 46 x 80 mm 218 x 28 mm	3.7 x 3.5 " 1.8 x 3.2 " 8.6 x 1.1 "
62808	Corners of Brewery	4 x A 4 x B 4 x C	5 x 193 mm 20 x 193 mm 20 x 20 x 193 mm	0.2 x 7.6 " 0.8 x 7.6 " 0.8 x 0.8 x 7.6 " including little parts
62809	US Brick Walls	2 x A 1 x B 1 x C	233 x 258 mm 218 x 258 mm 218 x 160 mm	9.2 x 10.2 " 8.6 x 10.2 " 8.6 x 6.3 "
62810	Wooden Walls	2 x A 2 x B	233 x 258 mm 149 x 258 mm	9.2 x 10.2 " 5.6 x 10.2 "

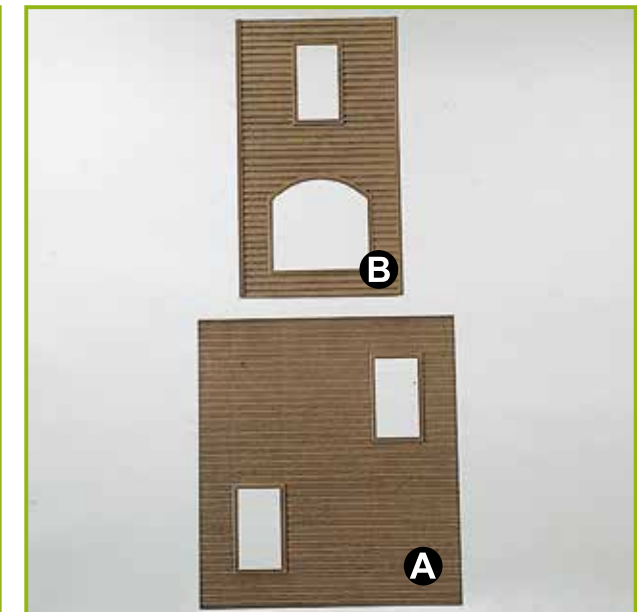
62808 Corners of Brewery



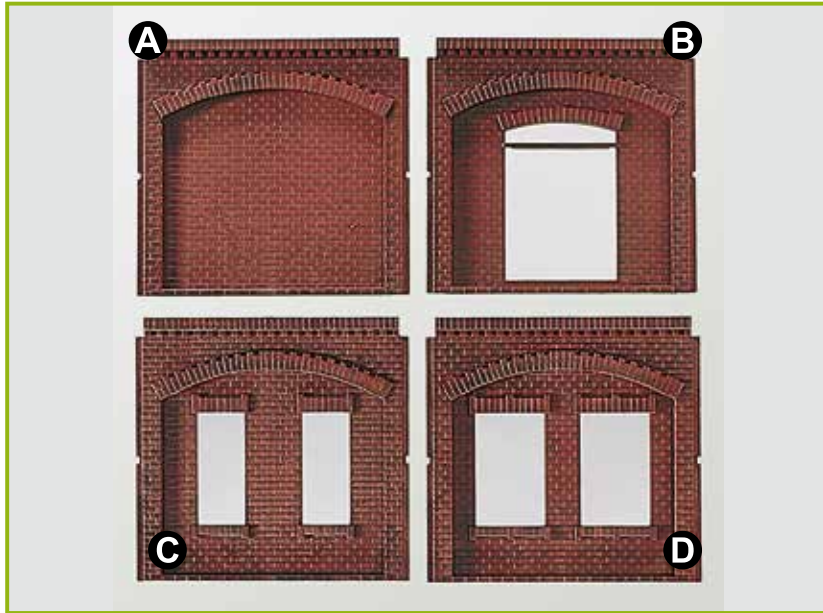
62809 US Brick Walls



62810 Wooden Walls

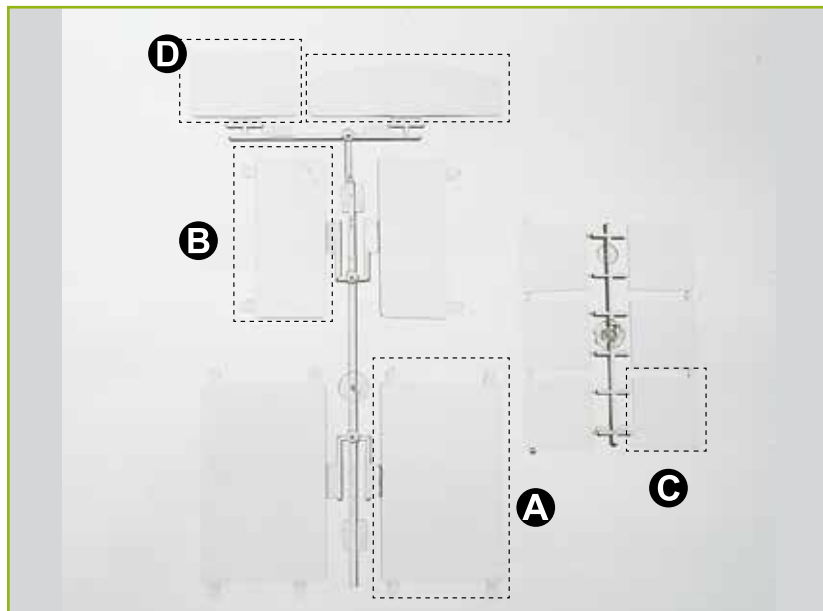


62811 Brewery Walls

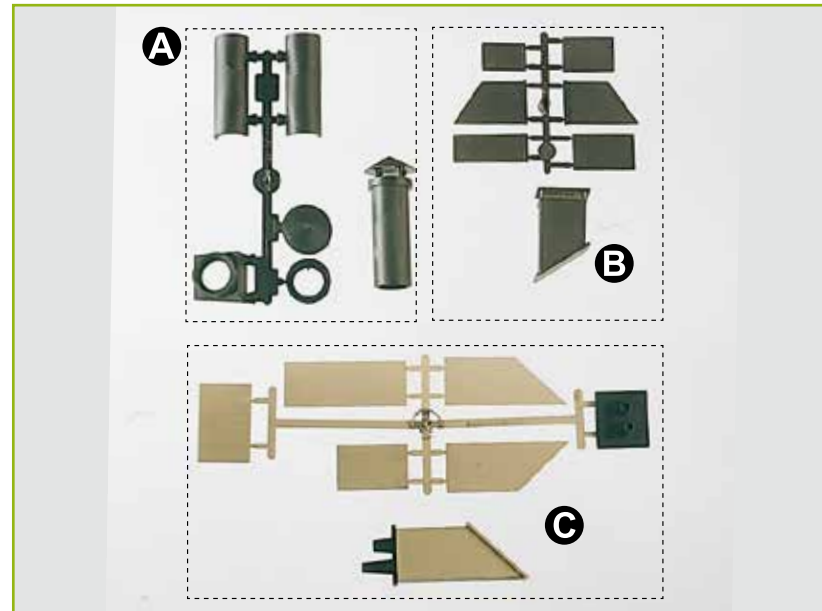


62811	Brewery Walls	1 x A 1 x B 1 x C 1 x D	219 x 209 mm 219 x 209 mm 219 x 209 mm 219 x 209 mm	8.6 x 8.2 " 8.6 x 8.2 " 8.6 x 8.2 " 8.6 x 8.2 "
62812	Chimneys Assortment	2 x A 2 x B 2 x C		
62813	Window Glass	4 x A 4 x B 12 x C 2 x D 2 x E	61 x 95 mm 35 x 80 mm 33 x 33 mm 52 x 32 mm 96 x 28 mm	2.4 x 3.7 " 1.4 x 3.1 " 1.3 x 1.3 " 2.0 x 1.3 " 3.8 x 1.1 "

62813 Window Glasses



62812 Assorted Chimneys



62280 Split Rail Fence

Fences made of split timbers are typical on North American farms. Eight sections with a total length of approximately 63 ".



55701 PIKO-Fix Plastic Model Cement
Needle-point dispenser for precise application. Strong solvent-type plastic model cement. Recommended for assembling all PIKO buildings, especially buildings for outdoor use.



62281 Wooden Sidewalks
Classic wooden sidewalks. An ideal addition to your Western town.



62091 House Light

The finely detailed model is fully operational, weather-resistant, made partly out of brass and can be fitted easily to any building. Height: 2.5 "



62090 Street Lamp

Operating, weather-resistant street lamp with brass lamp post. Height: 13.4 "



62297 US Mail Box

Parts for 4 mailboxes included in Kit.



55757 Lights

4 Light Sockets with light bulbs 16 V, E 5,5 for use as indoor lighting in all G- and 1 Gauge buildings.



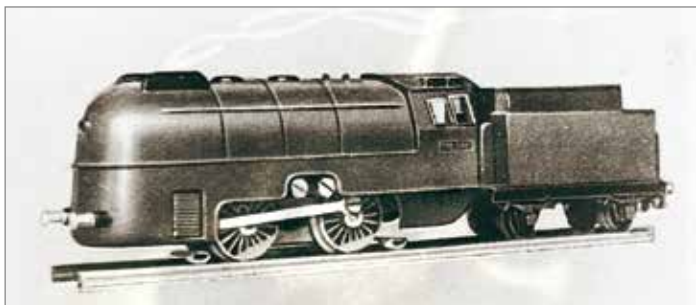
55758 Light Bulbs

10 pc. Light Bulbs 16 V for use in Interior Lights #55757.

Item #	Page	Item #	Page	Item #	Page	Item #	Page	Item #	Page	Item #	Page	Item #	Page	Item #	Page	Item #	Page		
35002	111	35224	28	35402	30	36070	118	36133	120	36215	121	37232	48	37560	63	37676	76	37966	102
35006	111	35225	28	35411	121	36072	118	36134	120	36216	121	37240	47	37568	63	37680	79	37967	103
35010	112	35226	28	35412	121	36073	118	36135	120	36220	116	37242	47	37583	59	37681	79	37968	103
35013	113	35227	28	35413	121	36074	118	36136	120	36221	116	37246	46	37584	59	37682	79	37969	104
35015	113	35228	27	35414	121	36075	118	36137	120	36250	120	37250	49	37585	50	37683	79	37970	105
35016	113	35229	27	35416	36	36076	118	36138	120	36302	93	37251	49	37590	60	37684	79	37971	103
35020	112	35230	29	35416	121	36078	118	36139	120	36320	119	37252	49	37591	60	37685	79	37972	102
35024	111	35231	29	35420	121	36079	118	36142	117	36500	115	37260	51	37592	61	37686	79	37973	104
35025	111	35240	26	35421	121	36080	118	36143	117	36505	115	37261	51	37593	61	37687	79	38107	10
35027	111	35250	29	36000	117	36081	118	36145	119	36510	115	37290	80	37594	61	37690	65	38108	10
35028	108	35251	29	36001	117	36082	118	36150	117	36511	115	37296	80	37600	80	37707	100	38109	11
35030	111	35258	29	36004	117	36083	118	36151	117	36512	115	37298	80	37601	80	37720	101	38112	13
35037	112	35260	111	36005	117	36084	118	36160	118	36914	116	37308	65	37602	80	37724	101	38113	11
35038	112	35261	111	36006	117	36085	118	36162	118	37010	99	37309	65	37611	80	37748	101	38120	17
35040	108	35265	31	36007	117	36090	119	36164	118	37011	100	37330	53	37630	75	37749	99	38121	16
35041	109	35266	31	36008	117	36090	119	36165	118	37012	99	37331	53	37631	75	37754	100	38123	13
35042	109	35267	119	36009	117	36091	118	36166	118	37013	99	37400	57	37632	75	37773	105	38125	17
35077	118	35268	30	36012	120	36093	118	36167	119	37015	76	37401	57	37633	75	37796	105	38126	17
35200	24	35269	30	36014	120	36094	118	36168	119	37016	76	37429	56	37636	75	37797	105	38152	12
35201	24	35270	30	36015	120	36104	120	36170	119	37017	101	37432	56	37637	76	37800	104	38230	41
35202	24	35271	31	36016	120	36105	120	36171	119	37018	99	37437	56	37650	78	37821	50	38231	38
35203	24	35272	30	36017	120	36106	120	36172	119	37071	118	37440	54	37651	78	37832	103	38233	40
35204	24	35280	30	36018	120	36107	120	36173	119	37100	14	37441	54	37652	78	37840	81	38235	38
35208	24	35281	31	36019	120	36108	120	36174	119	37130	15	37442	55	37656	78	37841	81	38236	40
35209	24	35282	31	36020	117	36109	120	36175	119	37151	15	37443	55	37657	78	37842	81	38237	39
35211	25	35290	29	36030	119	36110	119	36176	119	37145	16	37444	55	37663	77	37843	81	38238	42
35213	25	35291	29	36032	116	36111	119	36177	119	37154	14	37450	52	37664	77	37850	98	38239	42
35214	25	35292	29	36033	116	36112	119	36178	119	37155	12	37451	52	37665	77	37851	98	38255	43
35215	25	35293	29	36039	121	36113	117	36179	119	37202	50	37452	51	37666	77	37852	98	38256	43
35216	25	35294	29	36040	119	36114	117	36180	117	37210	44	37511	58	37667	77	37853	98	38260	41
35217	25	35300	32	36041	119	36115	117	36181	117	37212	44	37512	58	37668	77	37955	102	38261	42
35218	25	35301	32	36042	119	36117	117	36182	117	37214	44	37513	58	37669	77	37956	103	38502	36
35220	26	35302	32	36044	119	36118	117	36183	117	37222	45	37526	63	37670	77	37960	102	38506	36
35221	26	35310	32	36050	117	36130	120	36184	117	37223	45	37532	62	37671	76	37962	104	38508	36
35222	26	35400	30	36051	117	36131	120	36200	117	37230	64	37543	63	37672	76	37963	104	38509	37
35223	26	35401	30	36052	117	36132	120	36210	121	37231	64	37550	62	37675	77	37965	102	38510	37

Item #	Page	Item #	Page	Item #	Page	Item #	Page	Item #	Page	Item #	Page	Item #	Page	Item #	Page
38511	37	38774	94	38939	87	62008	126	62057	147	62208	162	62248	161	62296	129
38512	37	38775	86	38940	87	62009	143	62058	149	62209	130	62249	161	62297	184
38513	37	38778	94	38941	91	62009	143	62059	134	62210	130	62250	165	62297	184
38514	37	38779	95	38942	91	62010	143	62064	146	62212	171	62251	154	62700	175
38515	36	38784	95	38943	91	62011	143	62065	146	62213	171	62252	136	62701	175
38600	68	38785	95	38945	96	62012	153	62066	146	62214	171	62253	136	62702	178
38601	68	38786	92	38946	97	62013	139	62067	146	62215	170	62254	136	62703	178
38602	68	38788	92	38947	97	62014	138	62068	146	62216	170	62256	163	62705	174
38603	68	38789	92	38948	97	62015	139	62072	149	62217	170	62257	165	62706	174
38610	68	38790	96	38950	85	62016	139	62073	149	62218	170	62258	165	62707	172
38626	71	38791	93	38951	85	62017	139	62077	133	62219	167	62259	165	62708	172
38628	71	38792	86	38952	84	62018	142	62078	164	62220	167	62260	169	62709	177
38645	74	38795	93	38953	85	62019	142	62090	184	62221	161	62261	133	62710	176
38647	74	38796	86	38954	88	62021	135	62091	184	62222	156	62262	157	62714	177
38650	70	38809	90	38955	88	62022	148	62103	153	62223	158	62264	151	62715	176
38651	70	38825	90	38956	87	62023	168	62104	153	62224	158	62265	178	62716	175
38652	70	38831	90	38959	89	62028	164	62105	137	62225	158	62266	166	62717	175
38653	73	38885	90	38960	89	62030	127	62106	137	62226	161	62267	166	62718	173
38654	73	38903	87	38962	92	62032	128	62108	137	62227	166	62268	178	62719	173
38655	73	38909	87	38963	92	62034	144	62109	134	62228	134	62269	178	62721	171
38656	73	38910	87	38964	88	62035	144	62110	155	62229	160	62280	184	62722	171
38657	69	38913	85	38965	90	62036	145	62111	152	62230	131	62281	184	62723	171
38658	69	38915	85	38969	97	62037	140	62112	156	62231	131	62282	148	62724	171
38659	69	38918	89	55701	184	62038	140	62113	129	62232	129	62283	153	62725	173
38660	69	38921	87	55701	184	62039	140	62114	164	62233	162	62284	151	62726	176
38661	74	38922	91	55757	184	62044	133	62116	152	62234	170	62285	135	62800	180
38662	74	38923	91	55757	184	62046	141	62117	150	62235	170	62286	151	62801	180
38663	71	38924	88	55758	184	62047	141	62118	150	62236	170	62287	145	62802	180
38664	71	38925	87	55758	184	62048	141	62119	150	62237	170	62288	139	62803	181
38665	71	38926	90	56301	121	62049	141	62120	155	62238	163	62289	139	62804	181
38666	71	38928	87	56415	114	62050	147	62200	179	62239	163	62290	140	62805	181
38667	72	38930	89	56416	114	62051	148	62201	179	62240	163	62291	155	62806	181
38668	72	38931	84	62001	132	62052	148	62202	179	62242	154	62293	151	62807	182
38732	93	38933	84	62002	132	62053	147	62203	179	62243	163	62294	151	62808	182
38754	93	38934	89	62006	127	62054	190	62204	167	62246	159	62295	156	62809	182
38773	94	38938	87	62007	132	62056	133	62207	167	62247	159	62296	129	62810	182
														62811	183
														62812	183
														62813	183
														62814	178

CELEBRATING 75 YEARS



In 2024, it will be 75 years since the first Pico Express (yes, back then PIKO was spelled with a "c") made its rounds at the Leipzig Autumn Product Fair. Time to pause for a moment and take a quick look back.

Since 1952, production has been based in the historic toymaking town of Sonneberg, in the German state of Thüringen. So, it should come as no surprise that PIKO is deeply rooted in the region. Over the years, VEB PIKO (PIKO was a Volkseigener Betrieb, literally "People-owned Company", the East German government way of saying it was state-owned) first became the flagship company of the PIKO Spielwaren combine, which also made a wide variety of other toy products over the decades, and later the product group lead company for model trains. The combine was dissolved following German reunification in 1990. Fortunately, the planned liquidation of the company was prevented when Dr. René F. Wilfer took over the company in May, 1992. Since then, PIKO Spielwaren GmbH has developed continuously and sustainably and is now one of the world's leading manufacturers of high-quality model trains and accessories. In 2024, we can look back on 75 years full of great PIKO model trains, buildings and accessories... and unforgettable memories!

Of course, none of this would be possible without you, our customers—and that is why we want to thank you from the bottom of our hearts for your support. We hope that you will continue to enjoy model railroading with PIKO in the future and that you will create many more wonderful memories with us. We are already looking forward to it!

Photos, clockwise from left center: The first Pico Express from 1949; A pair of PIKO HO electric locos; The early PIKO factory in Leipzig; A modern-day view, showing historic PIKO signage; The PIKO factory in Sonneberg, prior to modernization.





Another first, only from PIKO! 25-Ton diesel locos factory-equipped for full battery-powered operation, with PIKO R/C and realistic digital sound built-in. Run the train over any track, ring the bell, blow the horn—all controlled from the easy and convenient Pocket Remote included with the loco. See page 37 for more details.



Our 38113 UP Freight Starter Set comes complete with an 0-6-0T steam loco, two freight cars, a circle of PIKO G-Track, and a safety-approved 120 volt transformer with a precision analog DC throttle. See page 11



Our new 38237 D&RGW Mogul #223 features great-working smoke, directional lights, and a fantastic digital sound system, with extensive features on Analog DC as well as DCC operation. See page 39



PIKO Spielwaren GmbH | Lutherstraße 30 | 96515 Sonneberg, Germany
 Tel. +49 (3675) 8972 - 42 | Fax +49 (3675) 8972 - 50 | hotline@piko.de
 www.piko.de PIKO® ist ein eingetragenes Warenzeichen.



PIKO America LLC | 4610 Alvarado Canyon Rd., Suite 5 | San Diego CA 92120
 Phone 619-280-2800 | Toll-Free 877-678-4449 | support@piko-america.com

www.piko-america.com

PIKO® is a registered Trademark. All rights reserved.

